



Jennett's Park CE Primary School

Head Teacher: Mrs Elizabeth Savage
3 Tawny Owl Square,
Jennett's Park, Bracknell RG12 8EB
T: 01344 301269

secretary@jennetts.bonitas.org.uk

7th May 2025

7th May 2026

Year 6 Advanced Secret Agent Tests (SATs)

Dear Talented Year 6 Pupils, and your equally talented families and staff,

I always like to write to you at this important time of year to say how incredibly proud we are of you as you prepare for your SATs. These tests will cover maths, reading, and spelling, punctuation and grammar. Every single day, we see your hard work, determination and resilience—but there is something very important we want you to remember.

These tests do not measure everything that makes you special.

The people who create and mark these tests do not know you in the way that we do. They cannot see your kindness, your humour, your determination or your creativity.

They do not know if, one day, you might:

- design buildings as an architect,
- save lives as a paramedic,
- create games as a software developer,
- inspire others as a teacher,
- tell stories as a writer,
- perform on stage as an actor or musician,
- or lead teams as an engineer, scientist or entrepreneur.

They cannot measure if you:

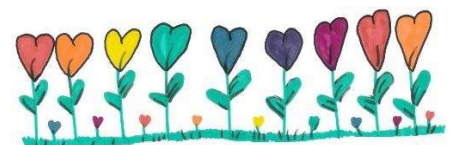
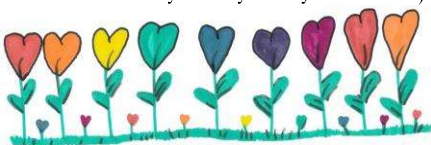
- help a friend when they are feeling worried,
- show courage when something feels difficult,
- or make others smile just by being you.

(And they definitely can't test your ability to remember absolutely everything right up until the moment you walk into the room... and then suddenly forget where you put your pencil!)

We would also like to say a heartfelt thank you to all the staff and families who have supported you along the way. Your encouragement, care and time make such a difference.

The results you receive may tell you something about how you approached the tests—but they do not define who you are, or what you are capable of achieving next.

You are already ready for your next journey into secondary school.



There are many ways to be successful, and each of you shines in your own way. You make us proud every day, and that will not change—no matter what happens in a test.

“If you are not willing to learn, no one can help you. If you are determined to learn, no one can stop you.”

As you prepare for SATs week, remember:

- Believe in yourself
- Try your best
- Get a good night's sleep
- And keep smiling

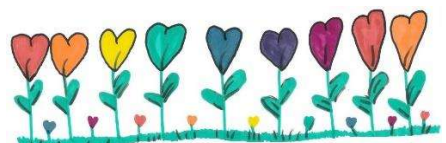
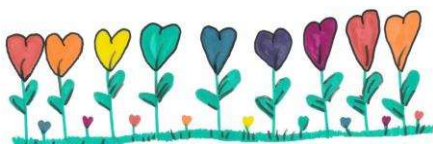
We look forward to welcoming you to breakfast club during SATs week if you would like to attend.

Good luck to every one of you—we are all behind you.

Yours sincerely



Liz Savage, Headteacher



KS2 SATs

2026
KS2
Year 6

A GUIDE FOR PARENTS



	Date	Test	Duration	Marks	Details
ENGLISH	Monday 11th May	Grammar, Punctuation and Vocabulary Paper 1 – Short Answer Questions	45 Minutes	50	<ul style="list-style-type: none"> A written test with a mixture of grammar, punctuation and vocabulary questions.
		Spelling – Paper 2	Approx 15 mins (not timed)	20	<ul style="list-style-type: none"> 20 words read aloud by the teacher. The score is added to the Paper 1 score to give a combined total.
	Tuesday 12th May	English Reading	60 Minutes	50	<ul style="list-style-type: none"> Three texts each increasing in challenge (fiction & non-fiction). A mixture of short and longer written responses
MATHS	Wednesday 13th May	Maths Paper 1 – Arithmetic	30 Minutes	40	<ul style="list-style-type: none"> Involves mathematical calculations covering all four operations (+, -, ×, ÷), including fractions, decimals and percentages.
	Thursday 14th May	Maths Paper 2 – Reasoning	40 Minutes	35	<ul style="list-style-type: none"> Both of these papers assess reasoning and problem-solving, including word problems. All three maths papers' scores are added together to give a total mark (out of 110).
		Maths Paper 3 – Reasoning			

- There are six tests over four days (three English and three maths).
- Writing is not a test – it is teacher assessed (using work from across the year).
- Children do not sit a science SATs test: science is assessed by teachers in class instead.
- Schools can administer the tests between 7am and 7pm on the scheduled day.
- All test papers are externally marked.
- KS2 test results are expected to be available online on Tuesday 7 July 2026.

LOOKING AT THE WHOLE CHILD

SATs are just one moment in your child's learning journey. Teachers look at your child's progress, effort and achievements across the whole year – not just their test results.

Silly School Education

