



Jennett's Park CE Primary School

Head Teacher: Mrs Elizabeth Savage
3 Tawny Owl Square,
Jennett's Park, Bracknell RG12 8EB
T: 01344 301269

secretary@jennetts.bonitas.org.uk

4th September 2025

Letter from Mrs Savage Headteacher

Dear Parents and carers of Jennett's Park,

I hope you and your families have enjoyed a restful and enjoyable summer. We'll send a full newsletter on Friday. We are excited to see everyone back and to welcome new families to our school community. We are looking forward to another fantastic year together in our academy community.

I'm so proud of what we achieve together. Love, aspiration and understanding weaves our diverse community together. Yet again we have had great results at the end of year! Thank you for everyone in their support of events and championing of the school.

Why do I think we do well in time where there is strife in the world? It is because we care about similar goals. By choosing our school you have understood Jennett's Park CE Primary embraces values that we call the Rainbow Promise. We know learning those values that get you the best chance to get on with their friends, family, peers and community.

Thank you to everyone who has offered time to us via our **Community Event Quiz** <https://forms.office.com/e/nAFcD6SQPT>. There is still plenty of time before our first events!



The Rainbow Promise

These are our Values we try to live each day



♥ Love

💎 Honesty

🚶 Respect

☮ Peace

☞ Forgiveness

⌚ Patience

👥 Support

😊 Kindness &

Joy



Code of Conduct

We are quiet when others are talking
We follow directions right away
We let others get on with their work
We respect each other

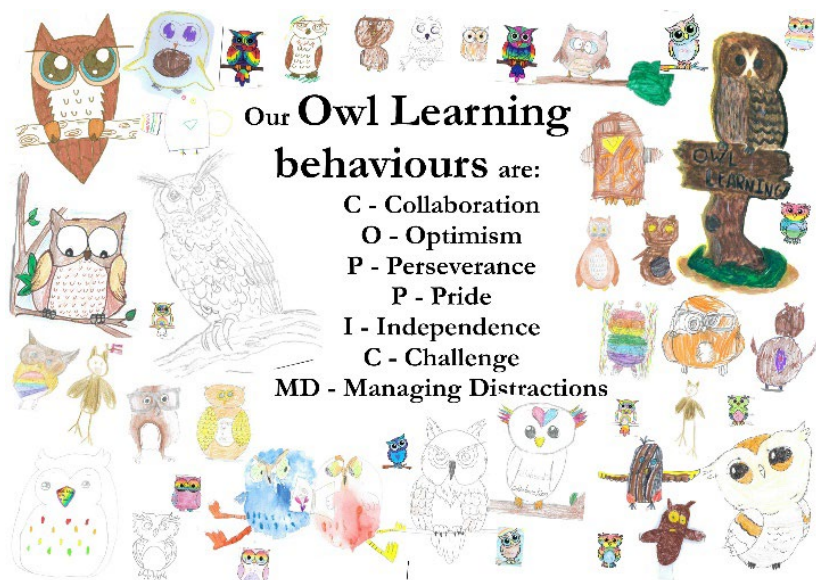


*Empowering our children
to flourish and achieve under
God's love
John 10:10 Live life in all its fullness*



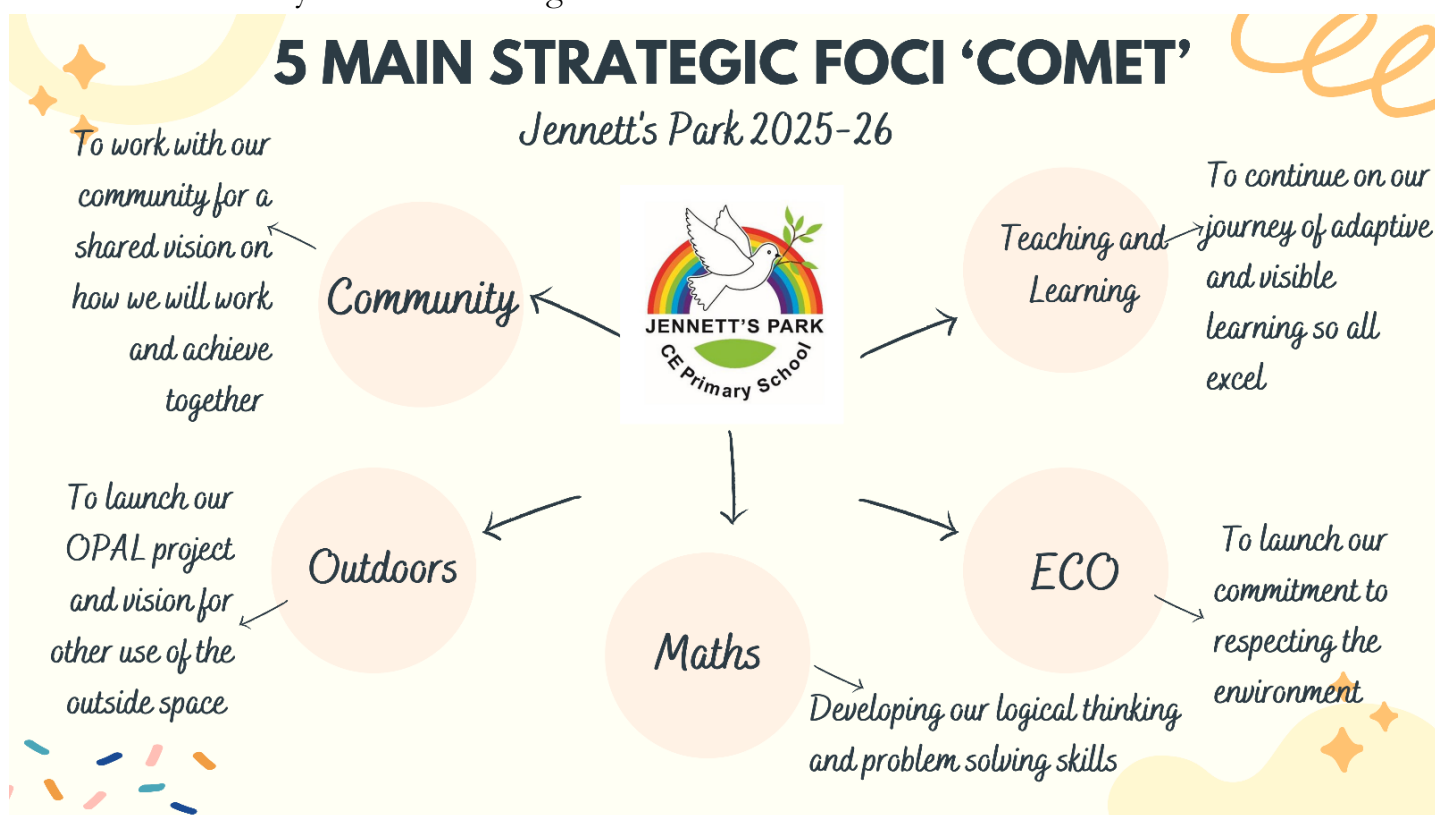
We care about your children getting a great job- we call the skills you need owl learning. We want a creative and collaborative school community where we care about living life in all its fullness and not narrowing opportunities.

We care about working with you and have gathered feedback from yourselves, staff and children on where to go next. We've chosen to focus on these 5 strands this year to make things even better.



5 MAIN STRATEGIC FOCI 'COMET'

Jennett's Park 2025-26



Key Dates for the Start of Term

- **INSET Days:** School will be closed to pupils on **Wednesday 3rd** and **Thursday 4th September** for staff training.
- **First Day of Term:** School reopens to pupils on **Friday 5th September**.
- A list of important dates for the first few weeks is **attached to this letter** and can also be found in each newsletter on our website. [School Newsletters | Jennett's Park](#)



Afterschool Club Our afterschool club is available to book now for the coming term. This restarts Monday 8th September. To reserve a place, please visit [Parent-User-Guide.pdf](#) or contact the school office for more information.

Meet the Teacher We warmly invite you to our 'Meet the Teacher' event and Open day (date and details attached). This is a great opportunity to connect with your child's new class teacher and find out more about the year ahead.

Uniform Expectations All pupils are expected to wear **neat and tidy uniform each day**, including on PE days. Our first check will be Friday 12th September. The only exceptions are birthdays and dress up days for events.

Please name all items. It doesn't matter if it is on an expensive embroidered name tape, a stick on label or written on the collar in Sharpie. However hard adults try to prevent it, children lose things. They put them down and they simply walk away. Please don't rely on the children recognising their own things, they won't. Please don't rely on the teachers and LSAs to go looking for lost items, they have so many things to do without having to find time to search for unnamed jumpers! Please name it if you want it back.

- If you require support with uniform (including donated items), please:
 - Visit our Thrive room for donations
 - Speak to a member of the PTA
 - Or contact Mrs Thorpe via the school office

So as for ways you can support your school community -

- Please read our newsletter and curriculum news. There are lots of dates that are published trying to give you as much notice as possible. We love seeing you.
- Please attend our wraparound care before or after school. School clubs are in the newsletter
- Please buy a lunch with us- especially on census day.
- Please consider volunteering and applying for a DBS with us to help either to the PTA, the governing body, in school or on trips or even if you have ad hoc corporate days with your team. We cherish your time! We are especially interested in reading or maths buddies, cooks, artists, gardeners or librarians.
- Please tell others about us.
- Please let us know if you need help.

Next Steps

- Please check the attached key dates and mark your diaries.
- Book afterschool club places and add your name to the waiting list if needed.



- Ensure your child has the correct uniform ready for their return.
- If you need any help with uniform, don't hesitate to reach out as above.
- Name all items.
- Read the guide for returning to school [supporting-children-going-back-to-school-2025-](#)

If you have any questions or need further information, please contact the school office or visit our website for updates and newsletters. Thank you for your continued support – let's make this a wonderful year for all our pupils, staff and families!

Yours sincerely



Liz Savage Headteacher of Jennett's Park CE Primary

