

Newsletter



John 10:10 Live life in all its fullness

Spring Term 9th May 2025

Please do see the below link for your child's year group webpage. Year group pages contain key dates, letters, PE days & curriculum newsletters.

Nursery	Reception	Year 1	Year 2
Year 3	Year 4	Year 5	Year 6

Upcoming Dates

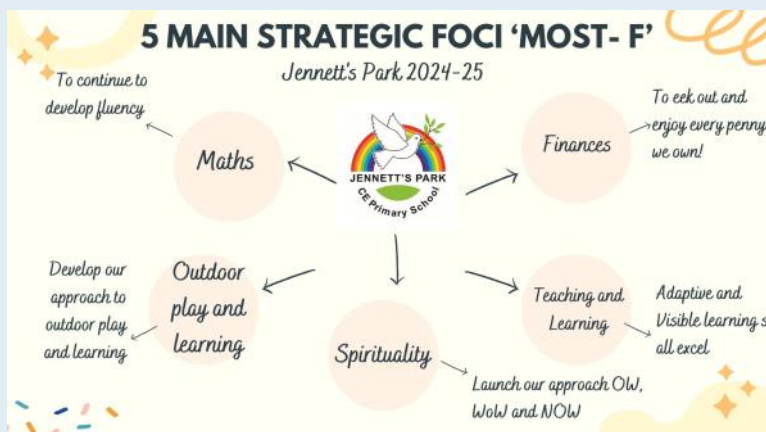
[Term Dates | Jennett's Park](#)

Mon 12 May	Advanced Secret Agent Tests start (SATs)	Y6
Weds 14 May	National Children's Day Stay and "Plant" 8:45am onwards (see Tapestry post)	All YR
Thurs 15 May	NO SLT coffee morning (SATs week) Census Day (please order a lunch!)	All
Fri 16 May	Pause Day Living Rainforest Visit	All Y3
19— 20 May	Oakwood Residential Suggested Screen Free week across school	Y5
Mon 19-23 May	Walk to School Week Suggested screen-free devices week	All
Thurs 22 May	SLT coffee morning 9-10 Music Room Rabbi visit	All Y4
Fri 23 May	Trip to Birdworld -Cancelled Y6 20p fair (all welcome to attend in school day)	YR-6 All
26-30 May	Half Term— SCL Club bookings now live!	YN-6
Mon 2-6 June	Child Safety Week	All
Thurs 5 June	World Environment Day	All
Fri 6 June	D-Day Anniversary	All

Upcoming Dates

**MOMENTS
MATTER,
ATTENDANCE
COUNTS.**

Tues 10 June	Sealife Centre Trip	Y2
Tues 17 June	Reptile and Bird of Prey Workshop (details to follow)	Y1
18-19 June	International Week—Paper Making Workshop	YR-6
Thurs 19 June	Wellington Country Park Visit	YR
Fri 20 June	World Refugee Day	All
Thurs 26 June	Sports Day (weather dependent, details to follow)	YR-6
Mon 30 June	Wild Science	YN
1—7 July	Scholastic Book Fair	All
Weds 2 July	Moving Up Morning Open Evening 5pm-7pm	All All
Mon 7 July	Competitive Sports Day 2:15pm (details to follow)	Y3-6
Weds 9 July	Rocksteady Concert (Rocksteady parents welcome, 9:15am)	YR-6
Fri 11 July	Wilde Arts Festival - South Hill Park (details to follow)	Y3-4
Tues 15 July	Summer Production (evening, details to follow)	Y5-6
Weds 16 July	Legoland STEM Trip End of term Nursery	Y6
Thurs 17 July	Summer Production (evening, details to follow)	Y5-6
Fri 18 July	End of term 1:30pm	YR-6



Dear Parents and Carers,

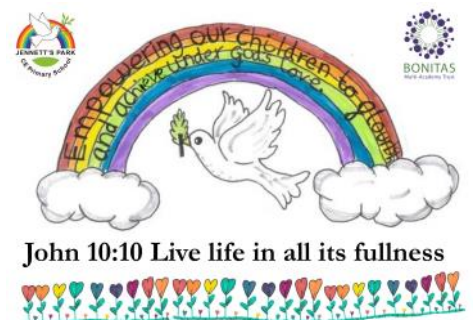
Next week is Advanced Secret Agent Tests (SATs) in school. We have a love of all things and aware that everything has a time and place. We love to celebrate the effort our children put in.

We have worked on our approach for **Spirituality** this year [Spirituality | Jennett's Park](#) See page 4 for an art competition to decorate our poem. All pictures will win a small prize and winning pictures will be made into art work. Thank you to the worship council who lead this!

Suncream—we love that so many people help us by sending in children armed with sunglasses, hats and suntan cream that they can apply! Please don't send in aerosol spray suncream though.

We had a problem with recent heat with keeping them cool enough and it can trigger asthmatic children and adults.

Liz Savage,
Headteacher



Spirituality Picture Competition

We would love children to read our new spirituality poems and design an image to go alongside it. Please pop any images into the office to help illustrate our poem. [Spirituality Poem Competition | Jennett's Park](#)

Take a moment, take some time
Draw your breath, blow it out.
Close your eyes, find some peace
It is time to be at ease.

Wow is easy, I'm in awe!
I would like to share it all!
Pay attention! Rejoice with me!
Let's live life in all its fullness with all its glee!

Ow is here, what a dear!
Makes me feel like I'm in fear.
I've got you; you are with me!
We can make it a happy place to be!

Now is the present, the present is a gift
Our minds, bodies and souls can make a shift
There is no Rainbow without rain
To get the price you have to go through the pain

Lunch menu changes

Due to the equipment fault we are experiencing, there are some changes to lunch menu for next week:

Monday 12th	Tuesday 13th
Pasta Primavera Mac & Cheese Tuna Wrap	Beef Tacos Veg Tacos Cheese Wrap

Nursery applications

A reminder that nursery applications must be submitted by 18th July for any families hoping to start with us in January 2026.

[Please see our website for details.](#)

Fundraising

A member of our JP team , Mrs Russell-Smith are fundraising for Nimsdai Foundation to create three scholarships for children. [Read more here.](#)

Birdworld Refunds

Hopefully, all parents except Reception have been refunded. We hope to get these refunds to you ASAP and thank you for your patience.



MAY HALF TERM HOLIDAY CLUB AT

Jennett's Park CE Primary School
3 Tawny Owl Square, Bracknell RG12 8EB

ACTIVE
ADVENTURE
TUES 27TH - FRI 30TH MAY

PACKED WITH OVER
30 THEMED ACTIVITIES
FOR 4-12 YEAR OLDS
PRICES FROM **£30 PER DAY**

Use code Bankhols10
for a 10% discount



A WEEK OF FUN AWAITS YOUR CHILD!

CALLING ALL YOUNG ADVENTURERS!

Are you ready to step into the wild and become a true survival expert?
Join the SCL Active Survival Skills Camp for an action-packed adventure
where you'll learn essential outdoor skills, make new friends, and have a
blast!



DEN BUILDING | WATER FILTERING | CAMPFIRES | FIRST AID

BOOKINGS AND MORE INFO **SCLACTIVE.CO.UK** | **0345 644 5747**

Celebrate

Spring Lunch

Thursday 15th May 2025

Chicken Goujons

Served with skinny Fries and Red Slaw.

Macaroni Cheese

served with a Garlic Ciabatta finger and Red Slaw.

Jacket Potato

Served with various toppings.

Strawberry frozen Yogurt

served with a Shortbread finger.



FAMILY PACKAGE £29!

ROYAL WINDSOR
RACECOURSE

BANK HOLIDAY Family RACE DAYS

MON 26 MAY

KIDS
GO
FREE

7 FANTASTIC FLAT RACES

- SHETLAND PONIES RACE
- FACEPAINTING • MINI LAND ROVERS
- ROCK CHOIR • BIRDS OF PREY
- ARTS & CRAFT STALL HOLDERS

BOOK NOW

www.windsor-racecourse.co.uk

Supporting Your Children Workshops

To book a space please email your full name to Inge.Taylor@bracknell-forest.gov.uk

These sessions are universal (not specific for SEND) and for adults supporting not the children themselves so **please arrange childcare if needed**

Each course is a **standalone 2-hour session** - please be aware that spaces are offered on a **first come first served basis** and parents should not just turn up.

Once you have completed an enrolment form your space will be confirmed

Please only book onto the sessions if you are *going to be able to attend* to avoid other parents missing out on the opportunity to have a place or let me know if you can no longer attend.

Helping children to overcome anxious thoughts and worries.

A 2-hour session looking at:

- What happens when children become anxious?
- Impact current events have had on children's mental health.
- Techniques for helping children deal with their fears / worries.



Wednesday 4th June 2025

@ Bracknell Open Learning Centre

6.30 – 8.30 pm

Monday 9th June 2025

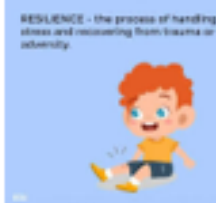
@ Bracknell Open Learning Centre

9.30 – 11.30 am

Encouraging Resilience – Keep Calm and Bounce Back

A 2-hour session looking at:

- How to build your child's natural resilience.
- Encouraging your child's positive social skills.
- Encouraging children out of their comfort zone and not to give up.



Tuesday 6th May 2025

@ Bracknell Open Learning Centre

6.30 – 8.30 pm

Supporting Children to get a Healthy Night's Sleep

A 2-hour session looking at:

- The different sleep issues facing our families.
- Tips on how to get a good night's sleep.
- Help children develop good sleeping habits.



Monday 16th June 2025

@ Bracknell Open Learning Centre

9.30 – 11.30 am

Managing Behaviour in a Positive Way

A 2-hour session looking at:

- Gain insight into your parenting style / relationship with your child.
- Learn or revisit positive ways of managing behaviour!
- Strategies to deal with unacceptable behaviours.



Please let me know if you would like to know when additional sessions are arranged

Reducing Sibling Rivalry

A 2-hour session looking at:






- Encouraging a more harmonious sibling relationship
- Learn / revisit techniques for children to cope with being a sibling.
- Boosting children's emotional literacy



Thursday 8th May 2025 **CANCELLED**

@ Bracknell Open Learning Centre

6.30 – 8.30 pm

Single Parent, Separated and Blended families – supporting children to cope with different family dynamics. A 2-hour session looking at: <ul style="list-style-type: none"> Different family dynamics and how they can work. Parental conflict resolutions Being the best parent that you can be for your child 	
Monday 12 th May 2025 @ Bracknell Open Learning Centre	6.30 – 8.30 pm
Parenting pre / early-teens in a Positive Way (aged 10 – 13) A 2-hour session looking at: <ul style="list-style-type: none"> Gain insight into the impact of your parenting style! Positive techniques for managing older children's behaviour. Boosting your relationship and communication with your child. 	
Please let me know if you would like to know when additional sessions are arranged	
Parenting your older teenagers in a Positive Way (aged 13 - 16) A 2-hour session looking at: <ul style="list-style-type: none"> How to listen so teens talk and talk so that teens listen Boundaries and impact around tech and social media Supporting teens to navigate the pressures that they face 	
Monday 9 th June 2025 @ Bracknell Open Learning Centre	6.30 – 8.30 pm
Supporting a smooth transition from Year R to Year 1 and beyond (not school specific) A 2-hour session looking at: <ul style="list-style-type: none"> What's involved in transition from reception to year 1. The best ways to support the transition. Boosting your child's resilience to cope with the change 	
Monday 19 th May 2025 @ Kings Academy Binfield (parents at this school only – please book through school)	9 – 11 am
Thursday 22 nd May 2025 @ St Margaret Clitherow (parents from this school only – please book through school)	9.30 – 11.30 am
Thursday 22 nd May 2025 @ Bracknell Open Learning Centre	6.30 – 8.30 pm
Thursday 5 th June 2025 @ Fox Hill (parents from this school only – book directly through school)	1 – 3 pm
Thursday 19 th June 2025 @ Harmans Water (parents from this school only – book directly through school)	9 – 11 am
Supporting a smooth secondary school Transition (YR 5/6 parents) A 2-hour session looking at: <ul style="list-style-type: none"> What the transition involves The positives and concerns of transitioning to a new setting Boosting your child's ability to have a smooth transition 	
Monday 19 th May 2025 @ Bracknell Open Learning Centre	6.30 – 8.30 pm
Tuesday 20 th May 2025 @ Winkfield St. Mary's (parents from this school only – please book through school)	1.15 – 3.15 pm
Monday 2 nd June 2025	9 – 11 am

Edgbarrow School



Progress and Student Support Information Morning

For Parents/Carers of Year 5 & Year 6 pupils

Wednesday 11th June 2025

9.00am — 11am

Come to our SEND Information event to

**“Meet the Progress and
Student Support Teams”.**

Find out who we are, what we do
and how we support our pupils
with additional needs.

Book your place before 28/05/25 by emailing:
rebecca.dobson@edgbarrowschool.co.uk

Where can I get advice and support for my child?



Early years settings, schools and colleges

Local Offer

Family Information Service (FIS)

Information, advice and support service (IASS)

Parent Carer Forum (PCF)

Provides information on where to get additional help if you feel your child requires it.

Provides information about SEND provision expected to be available locally across education, health and social care for children and young people in the borough who

- have SEN
- are disabled,
- including those who do not have Education, Health and Care (EHC) plans.

Provides an impartial information and signposting service relating to childcare and other services that support parents and carers of children and young people up to the age of 20 (25 with additional needs).

Works with organisations and professionals who support families.

Provides impartial and confidential information, advice and support about the legal rights of children and young people with special educational needs and disabilities (SEND) to parents and carers and to children and young people themselves.

Provides the chance to be listened to and influence partners to design the services that are needed. Bracknell Forests PCF is an independent group which empowers families to access these services and advocates for inclusion for all.

Where to find it

Visit your school website

Visit www.bracknell-forest.gov.uk/localoffer

Visit www.bracknell-forest.gov.uk/FIS
Or call 01344 353133

Visit www.bracknell-forestiass.co.uk
Or call 01344 354011

Visit www.bracknell-pcf.com

Bracknell Forest's Family Services Directory and Additional Needs Info Hub (SEND Local Offer)



Providing free, impartial information and advice about Special Educational Needs and Disabilities (SEND) and all other family matters.

- SEND information all in one place - how to access services and support including Education, Health and Care Plans (EHCPs)
- Education, childcare and early years funding
- Leisure and holiday activities
- Advice and support services
- Brokerage service for those struggling to find childcare

Family Information Service: fis@bracknell-forest.gov.uk

01344 353133

www.bracknell-forest.gov.uk/localdirectory



Where can I get help with an EHCP?

Where is my nearest baby clinic?

I'm struggling with my child's behaviour – where can I get help?

How do I apply for childcare funding?