

Newsletter



John 10:10 Live life in all its fullness

Spring Term 16th May 2025

Please do see the below link for your child's year group webpage. Year group pages contain key dates, letters, PE days & curriculum newsletters.

Nursery	Reception	Year 1	Year 2
Year 3	Year 4	Year 5	Year 6

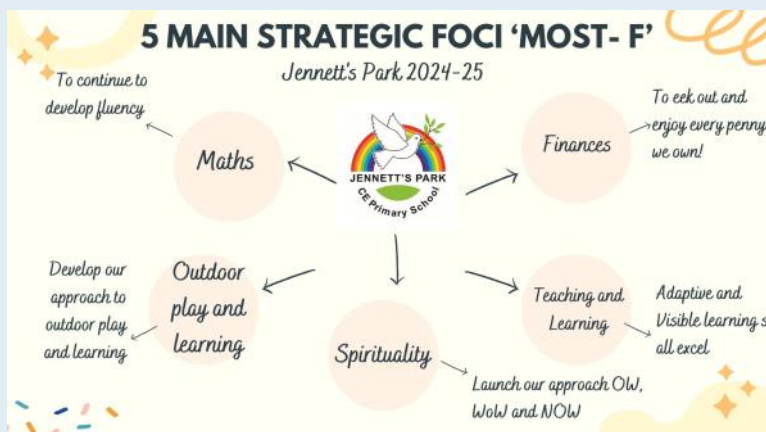
Upcoming Dates [Term Dates | Jennett's Park](#)

19— 20 May	Oakwood Residential Suggested Screen Free week across school	Y5
Mon 19-23 May	Walk to School Week Suggested screen-free devices week	All
Thurs 22 May	SLT coffee morning 9-10 Music Room Rabbi visit	All Y4
Fri 23 May	Y6 20p fair (children to attend in school day)	All
26-30 May	Half Term— SCL Club bookings now live!	YN-6
Mon 2-6 June	Child Safety Week	All
Thurs 5 June	World Environment Day	All
Fri 6 June	D-Day Anniversary	All
Tues 10 June	Sealife Centre Trip	Y2
Tues 17 June	Reptile and Bird of Prey Workshop (details to follow)	Y1
18-19 June	International Week—Paper Making Workshop	YR-6
Thurs 19 June	Wellington Country Park Visit	YR
Fri 20 June	World Refugee Day	All

Upcoming Dates

**MOMENTS
MATTER,
ATTENDANCE
COUNTS.**

Weds 25 June	Sports day Nursery	N
Thurs 26 June	Sports Day YR <i>parents to arrive at drop-off / from 8:45am</i> Y1-6 <i>parents to arrive from 10:30am</i> (weather dependent, further details to follow)	YR-6
Mon 30 June	Wild Science	YN
1—7 July	Scholastic Book Fair	All
Weds 2 July	Moving Up Morning Open Evening 5pm-7pm	All All
Mon 7 July	Competitive Sports Day 2:15pm (details to follow)	Y3-6
Weds 9 July	Rocksteady Concert (Rocksteady parents welcome, 9:15am)	YR-6
Fri 11 July	Wilde Arts Festival - South Hill Park (details to follow)	Y3-4
Tues 15 July	Summer Production (evening, details to follow)	Y5-6
Weds 16 July	Legoland STEM Trip End of term Nursery	Y6
Thurs 17 July	Summer Production (evening, details to follow)	Y5-6
Fri 18 July	End of term 1:30pm	YR-6





Dear Parents and Carers,

VE Day picnic

500 adults came to join us last Friday. Everyone commented on how lovely it was to get together. Life in all its fullness means time to be with family. Thank you for coming to be with us.

LIAIF—On a linked theme—look at our celebration of life in all its fullness. [LIAIF- Life in all its Fullness | Jennett's Park](#)

Suggested screen free week

In line with a hope to improve all our mental health we would ask you to support a school wide 'screen free week'. Whether you join in or not we recommend a discussion on 'What is a healthy balance on things we enjoy?' More themes to discuss here [Esafety | Jennett's Park](#)

Sports Day Save the dates 25th (Nursery) and 26th YR-6.

Obviously weather dependant but a great morning planned!

Art week— some final pictures [Art Curriculum | Jennett's Park](#)

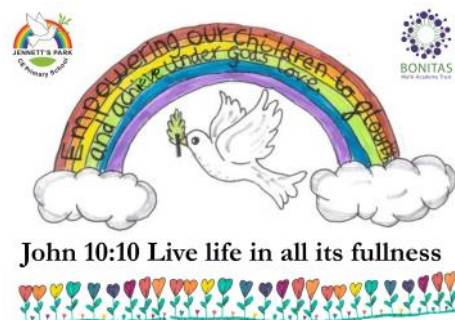
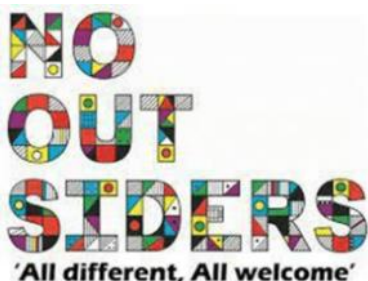
We have been asked to pass onto you this information sheet on

Misinformation after the online rumours this week in wider

Bracknell [Understanding-misinformation-and-disinformation-](#)

See you on the gate

Liz Savage, Headteacher



Spirituality Picture Competition

We would love children to read our new spirituality poems and design an image to go alongside it. Please pop any images into the office to help illustrate our poem.

[Spirituality Poem Competition | Jennett's Park](#)

Take a moment, take some time
Draw your breath, blow it out.
Close your eyes, find some peace
It is time to be at ease.

Wow is easy, I'm in awe!
I would like to share it all!
Pay attention! Rejoice with me!
Let's live life in all its fullness with all its glee!

Ow is here, what a dear!
Makes me feel like I'm in fear.
I've got you; you are with me!
We can make it a happy place to be!

Now is the present, the present is a gift
Our minds, bodies and souls can make a shift
There is no Rainbow without rain
To get the price you have to go through the pain

The 20p Fair

For those of you who haven't experienced this before, Year 6 put together their own mini summer fair for us all. We enjoy penalty shootouts, lucky dips, name the teddy, sweets in a jar and much more!



All children will have the opportunity to visit the fair with their class during the school day. Each stall costs 20p a go.

If you would like to help the Year 6 children raise funds, please do send your child in with some money on Friday 23rd May!



MAY HALF TERM HOLIDAY CLUB AT

Jennett's Park CE Primary School
3 Tawny Owl Square, Bracknell RG12 8EB

ACTIVE
ADVENTURE
TUES 27TH - FRI 30TH MAY

PACKED WITH OVER
30 THEMED ACTIVITIES
FOR 4-12 YEAR OLDS
PRICES FROM **£30 PER DAY**

Use code **Bankhols10**
for a 10% discount



A WEEK OF FUN AWAITS YOUR CHILD!

CALLING ALL YOUNG ADVENTURERS!



Are you ready to step into the wild and become a true survival expert?
Join the SCL Active Survival Skills Camp for an action-packed adventure
where you'll learn essential outdoor skills, make new friends, and have a
blast!

DEN BUILDING | WATER FILTERING | CAMPFIRES | FIRST AID

BOOKINGS AND MORE INFO **SCLACTIVE.CO.UK** | **0345 644 5747**

Nursery applications

A reminder that nursery applications must be submitted by 18th July for any families hoping to start with us in January 2026.

[Please see our website for details.](#)

Reception September 2025

If your child is due to join our school's Reception in September 2025, your registration packs are being sent home today.

Maths Whizz

Some fantastic news... congratulations to classes Peacocks and Macaws for their outstanding efforts on Maths-Whizz last week! 93% and 95% respectively of the class made it into the Hall of Fame

HAF / Free School Meals

If you are in receipt of any benefits or support, please do check if you are eligible for Free School Meals via the [BFC website.](#)

If you already receive Free School Meals, please do see the HAF Holiday information on the next page.



Summer fun



**Free holiday activities and food (HAF)
for children and young people entitled
to benefit related free school meals (FSM).**

Bracknell Forest Council is working closely with local companies to help support a wide range of children's summer holiday clubs for older children.

The holiday clubs provide:

- water based activities
- golf and tennis
- theatre and dance
- day trips
- basketball

and so many more fun activities!

Most clubs provide a healthy meal and snacks.
Check the clubs booking page for more information.

The holiday activities and food programme is a
Department for Education funded programme to
support children aged 4-16 years (Reception - Year 11)
in receipt of benefits related free school meals.



Booking is
available from
23 May 2025
for children
registered for free
school meals.



Register for free school meals:

[www.bracknell-forest.gov.uk/schools-and-learning/
schools/free-school-meals](http://www.bracknell-forest.gov.uk/schools-and-learning/schools/free-school-meals).

Book your place on the HAF programme: bit.ly/haf-bracknell



Supporting Your Children Workshops

To book a space please email your full name to Inge.Taylor@bracknell-forest.gov.uk

These sessions are universal (not specific for SEND) and for adults supporting not the children themselves so **please arrange childcare if needed**

Each course is a **standalone 2-hour session** - please be aware that spaces are offered on a **first come first served basis** and parents should not just turn up.

Once you have completed an enrolment form your space will be confirmed

Please only book onto the sessions if you are *going to be able to attend* to avoid other parents missing out on the opportunity to have a place or let me know if you can no longer attend.

Helping children to overcome anxious thoughts and worries.

A 2-hour session looking at:

- What happens when children become anxious?
- Impact current events have had on children's mental health.
- Techniques for helping children deal with their fears / worries.



Wednesday 4th June 2025

@ Bracknell Open Learning Centre

6.30 – 8.30 pm

Monday 9th June 2025

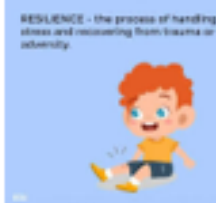
@ Bracknell Open Learning Centre

9.30 – 11.30 am

Encouraging Resilience – Keep Calm and Bounce Back

A 2-hour session looking at:

- How to build your child's natural resilience.
- Encouraging your child's positive social skills.
- Encouraging children out of their comfort zone and not to give up.



Tuesday 6th May 2025

@ Bracknell Open Learning Centre

6.30 – 8.30 pm

Supporting Children to get a Healthy Night's Sleep

A 2-hour session looking at:

- The different sleep issues facing our families.
- Tips on how to get a good night's sleep.
- Help children develop good sleeping habits.



Monday 16th June 2025

@ Bracknell Open Learning Centre

9.30 – 11.30 am

Managing Behaviour in a Positive Way

A 2-hour session looking at:

- Gain insight into your parenting style / relationship with your child.
- Learn or revisit positive ways of managing behaviour!
- Strategies to deal with unacceptable behaviours.



Please let me know if you would like to know when additional sessions are arranged

Reducing Sibling Rivalry

A 2-hour session looking at:






- Encouraging a more harmonious sibling relationship
- Learn / revisit techniques for children to cope with being a sibling.
- Boosting children's emotional literacy



Thursday 8th May 2025 **CANCELLED**

@ Bracknell Open Learning Centre

6.30 – 8.30 pm

Single Parent, Separated and Blended families – supporting children to cope with different family dynamics. A 2-hour session looking at: <ul style="list-style-type: none"> • Different family dynamics and how they can work. • Parental conflict resolutions • Being the best parent that you can be for your child 	
Monday 12 th May 2025 @ Bracknell Open Learning Centre	6.30 – 8.30 pm
Parenting pre / early-teens in a Positive Way (aged 10 – 13) A 2-hour session looking at: <ul style="list-style-type: none"> • Gain insight into the impact of your parenting style! • Positive techniques for managing older children's behaviour. • Boosting your relationship and communication with your child. 	
Please let me know if you would like to know when additional sessions are arranged	
Parenting your older teenagers in a Positive Way (aged 13 - 16) A 2-hour session looking at: <ul style="list-style-type: none"> • How to listen so teens talk and talk so that teens listen • Boundaries and impact around tech and social media • Supporting teens to navigate the pressures that they face 	
Monday 9 th June 2025 @ Bracknell Open Learning Centre	6.30 – 8.30 pm
Supporting a smooth transition from Year R to Year 1 and beyond (not school specific) A 2-hour session looking at: <ul style="list-style-type: none"> • What's involved in transition from reception to year 1. • The best ways to support the transition. • Boosting your child's resilience to cope with the change 	
Monday 19 th May 2025 @ Kings Academy Binfield (parents at this school only – please book through school)	9 – 11 am
Thursday 22 nd May 2025 @ St Margaret Clitherow (parents from this school only – please book through school)	9.30 – 11.30 am
Thursday 22 nd May 2025 @ Bracknell Open Learning Centre	6.30 – 8.30 pm
Thursday 5 th June 2025 @ Fox Hill (parents from this school only – book directly through school)	1 – 3 pm
Thursday 19 th June 2025 @ Harmans Water (parents from this school only – book directly through school)	9 – 11 am
Supporting a smooth secondary school Transition (YR 5/6 parents) A 2-hour session looking at: <ul style="list-style-type: none"> • What the transition involves • The positives and concerns of transitioning to a new setting • Boosting your child's ability to have a smooth transition 	
Monday 19 th May 2025 @ Bracknell Open Learning Centre	6.30 – 8.30 pm
Tuesday 20 th May 2025 @ Winkfield St. Mary's (parents from this school only – please book through school)	1.15 – 3.15 pm
Monday 2 nd June 2025	9 – 11 am

Where can I get advice and support for my child?



Early years settings, schools and colleges

Local Offer

Family Information Service (FIS)

Information, advice and support service (IASS)

Parent Carer Forum (PCF)

Provides information on where to get additional help if you feel your child requires it.

Provides information about SEND provision expected to be available locally across education, health and social care for children and young people in the borough who

- have SEN
- are disabled,
- including those who do not have Education, Health and Care (EHC) plans.

Provides an impartial information and signposting service relating to childcare and other services that support parents and carers of children and young people up to the age of 20 (25 with additional needs).

Works with organisations and professionals who support families.

Provides impartial and confidential information, advice and support about the legal rights of children and young people with special educational needs and disabilities (SEND) to parents and carers and to children and young people themselves.

Provides the chance to be listened to and influence partners to design the services that are needed. Bracknell Forests PCF is an independent group which empowers families to access these services and advocates for inclusion for all.

Where to find it

Visit your school website

Visit www.bracknell-forest.gov.uk/localoffer

Visit www.bracknell-forest.gov.uk/FIS
Or call 01344 353133

Visit www.bracknell-forestiass.co.uk
Or call 01344 354011

Visit www.bracknell-pcf.com

Bracknell Forest's Family Services Directory and Additional Needs Info Hub (SEND Local Offer)



Providing free, impartial information and advice about Special Educational Needs and Disabilities (SEND) and all other family matters.

- SEND information all in one place - how to access services and support including Education, Health and Care Plans (EHCPs)
- Education, childcare and early years funding
- Leisure and holiday activities
- Advice and support services
- Brokerage service for those struggling to find childcare

Family Information Service: fis@bracknell-forest.gov.uk

01344 353133

www.bracknell-forest.gov.uk/localdirectory



Where can I get help with an EHCP?

Where is my nearest baby clinic?

I'm struggling with my child's behaviour – where can I get help?

How do I apply for childcare funding?