



# Jennett's Park CE Primary School

Head Teacher: Mrs Elizabeth Savage  
3 Tawny Owl Square,  
Jennett's Park, Bracknell RG12 8EB  
T: 01344 301269

[secretary@jennetts.bonitas.org.uk](mailto:secretary@jennetts.bonitas.org.uk)

## Welcome back- Adverse weather, newsletters, National College and Drop ins.

3.1.25

Dear Parents and Carers,

**Happy new year.** I hope the end of the last year was kind to you. We are looking forward to working with you and your wonderful Rainbow and Owl learners again in 2025- it's shaping up to be a great year.

We begin again on Tuesday 7th January. Gates open at 8:40. We free a soft start to make things easier but try to head to us by 8:45 to start the day efficiently and calmly.

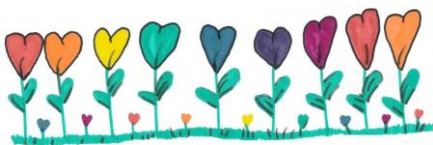
**Newsletters for each year group** will be out by the end of the week on our site. Check out our main newsletter for links. <https://www.jennetts.bonitas.org.uk/school-office/newsletters/> or navigate using the pages. <https://www.jennetts.bonitas.org.uk/children/learning-in-school/year-groups/>

I try to explain each year about **adverse weather**. None of us can read a crystal ball to know what will happen nor indeed accurately predict the weather but as we head to deepest winter where there's a higher likelihood it seems sensible. If a pattern looks like closing the school we will be in close contact firstly with staff teams. We won't close unnecessarily but if staff can't make it in or the site is too treacherous we have to! We try to tell you about most things in advance but in this case closure notices comes a little later to you via an email to you but also on the school website, tapestry, seesaw and radio by 7:45. It can come earlier but that then gives you around an hour to make plans. **THERE IS NO POINT CALLING TO ASK** – it blocks up lines unnecessarily. If you don't think we have your latest contact details get them to us via [secretary@jennetts.bonitas.org.uk](mailto:secretary@jennetts.bonitas.org.uk)

We always have online tasks set on a snow day for those who wish it as per our policy <https://www.jennetts.bonitas.org.uk/wp-content/uploads/2023/01/JPCE-Remote-Learning-Policy-2022-v3.pdf>

We're delighted to let you know that **Jennett's Park has become a member of The National College** – a multi-award-winning online training provider for staff and parents.

**What does this mean for you?** As part of our membership, The National College provides dedicated training and resources for parents and carers – particularly, around online safety and keeping children safe online.



**Online safety advice on any topic** Of course, staff will continue to teach children about the risks online. But with the internet so readily accessible, the most effective approach to online safety needs everyone involved, including parents and carers.

That's why you've now got access to hundreds of courses, explainer videos and online safety guides to support your awareness of the online world. Topics range from understanding apps like TikTok and Instagram to recognising the signs of online harm and what you can do to help.

**Signing up to the platform is simple.** Just follow <https://v2.nationalcollege.com/enrol/jennett-s-park-cofe-primary-school> and complete your details. Once you're set up, you'll be able to choose 'Parent/Carer' as your user type and get instant access to all training and resources.

Another benefit of The National College is its **National Online Safety app**, which you can download for free. It gives you access to all their parent and carer resources on the go, whenever you want.

The National College has a **brilliant support team** if you have any questions. Their help centre provides a comprehensive bank of answers to most FAQs, but if you still can't find the answer you're looking for, you can always get in contact with them.

I hope you'll sign-up and make the most of their resources. The first one I'd point you towards to is <https://nationalcollege.com/guides/supporting-children-to-return-to-routine/download/pdf>

At the end of the week we'll share details of our **new monthly drop ins to chat to the SLT and Inclusion teams** about a range of topics or to just have a cuppa and a chat.

We look forward to once again living life in all its fullness with you.

Yours sincerely



Liz Savage  
Headteacher of Jennett's Park CE Primary

