



# YEAR 1

Spring Term

January-February 2024

## Reminders

### PE

Year 1 must come to school in their P.E kit on a **MONDAY**. This must be school P.E kit.

### READING AT HOME

Books will be changed on a **Fri-day**. We expect parents to hear their children read **at least 4 times a week**.

Please **record in your child's reading record** when you have heard them read at home.

### LIBRARY

We aim for children to change their library books on a **Friday** afternoon.

### CLASS TEACHERS:

#### **Whinchats**

Miss Bean

#### **Stonechats**

Mrs Craddock (Mon-Weds)

Mrs Leatherbarrow (Weds-Fri)

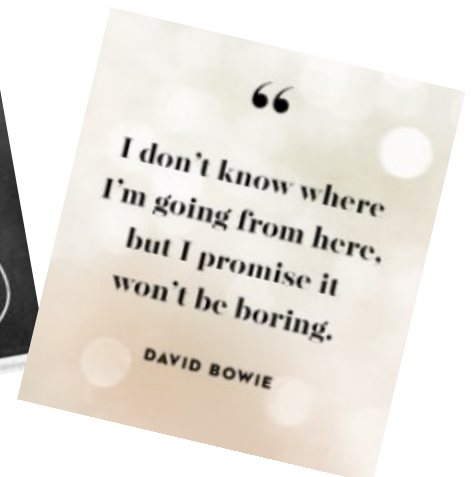
## Year 1 News

Welcome back everyone! Happy New Year! We hope you had a wonderful Christmas break and are excited for the new year ahead.

Last term was action packed and fun filled! We were blown away by the progress we saw from the children in all areas of the curriculum. They showed themselves to be hardworking, enthusiastic learners and it was a pleasure to see them becoming confident Year 1's. Our 'Wonderful Weather' topic led to the creation of some beautiful artwork where the children learnt the skill of colour mixing as well as creating their own weather forecasts. The children engaged enthusiastically with many different science investigations in our 'Seasons' science unit. Of course, we were extremely proud of the beautiful Christmas concert and the confident performances the Year 1 children gave.

Should you wish to come and speak to one of us regarding any questions throughout the year, please email or call the school office.

Miss Bean, Mrs Craddock and Mrs Leatherbarrow





# Year 1

Spring Term

January-February 2024

Week	Numeracy	Literacy
Week One	2D and 3D shape	New Year focus
Week Two	Place Value to 20	Traction Man
Week Three	Place Value to 20	Traction Man
Week Four	Addition and subtraction within 20	Traction Man
Week Five	Addition and subtraction within 20	Traction Man
Week Six	Addition and subtraction within 20	Toys Around the World

## Curriculum

Our topic this half term is 'Toys' where we will be exploring how toys have changed throughout history. Our afternoons are cross curricular covering art, DT, science, history and geography through this topic.

In R.E will be exploring the question 'Was it always easy for Jesus to show friendship?', keeping our focus on the Christian faith.

In PSHEC we will be looking at healthy living including teeth, food and our emotions.

In Music we will carry on following our Sing up scheme of work and will focus on the musical topic of 'Football', where we will explore pitch and rhythm.

In P.E we are fortunate enough to be welcoming a gymnastics coach who will be teaching keys skills to the children for the first half of Spring 1 and we will continue following Real PE thereafter.

In Science, we will be investigating common invertebrates and carnivores, omnivores and herbivores through the unit 'On Safari'.