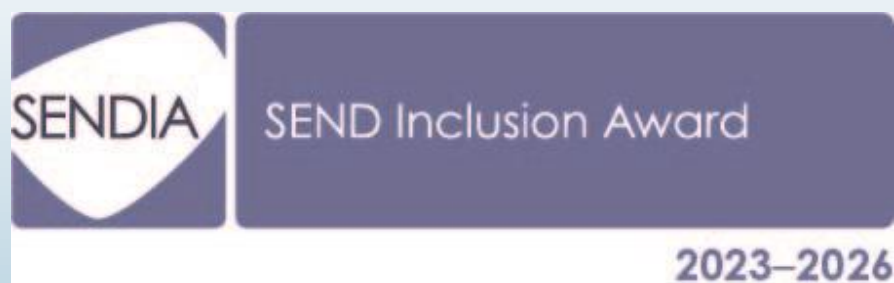




Newsletter

Autumn Term 10th November 2023
secretary@jennetts.bonitas.org.uk
John 10:10 Live life in all its fullness



Dear Parents and Carers,

Next week is be a Buddy not a Bully week. Mrs Dhillon and the ABA team have several ideas but we thought we'd share a few set routines here:



Monday—wear odd socks if you can to express solidarity that much like an odd sock it's ok to be different! On Friday children wear their own clothes for free in return for a pledge to BE A BUDDY not A BULLY.

We say a fond farewell to Roxy Stock (HLTA) and Roy Clarke (Site manager) who move onto pastures new. Thank you for all your help in supporting children. Welcome to Lucie McGill (teacher) and Greg Forsys (site manager).

Building Friendships at Jennett's CE Primary School

At Jennett's Park CE Primary School, we encourage a kind and supportive environment where children feel safe and happy.

We are woven together with our community to flourish and achieve with our Rainbow Promise – it shows us how to get on with our friends, neighbours and family.



We have rearranged an Open evening for 29th November 4– 5:30 all are welcome. That is for both current and prospective parents.

Reminder—please look at the E-safety pages and share to those who say they haven't read it!

[E-safety | Jennett's Park \(bonitas.org.uk\)](https://bonitas.org.uk)

Curriculum news and YG plans are NOW available on YG pages apologies for delay [Year Groups | Jennett's Park \(bonitas.org.uk\)](https://bonitas.org.uk)

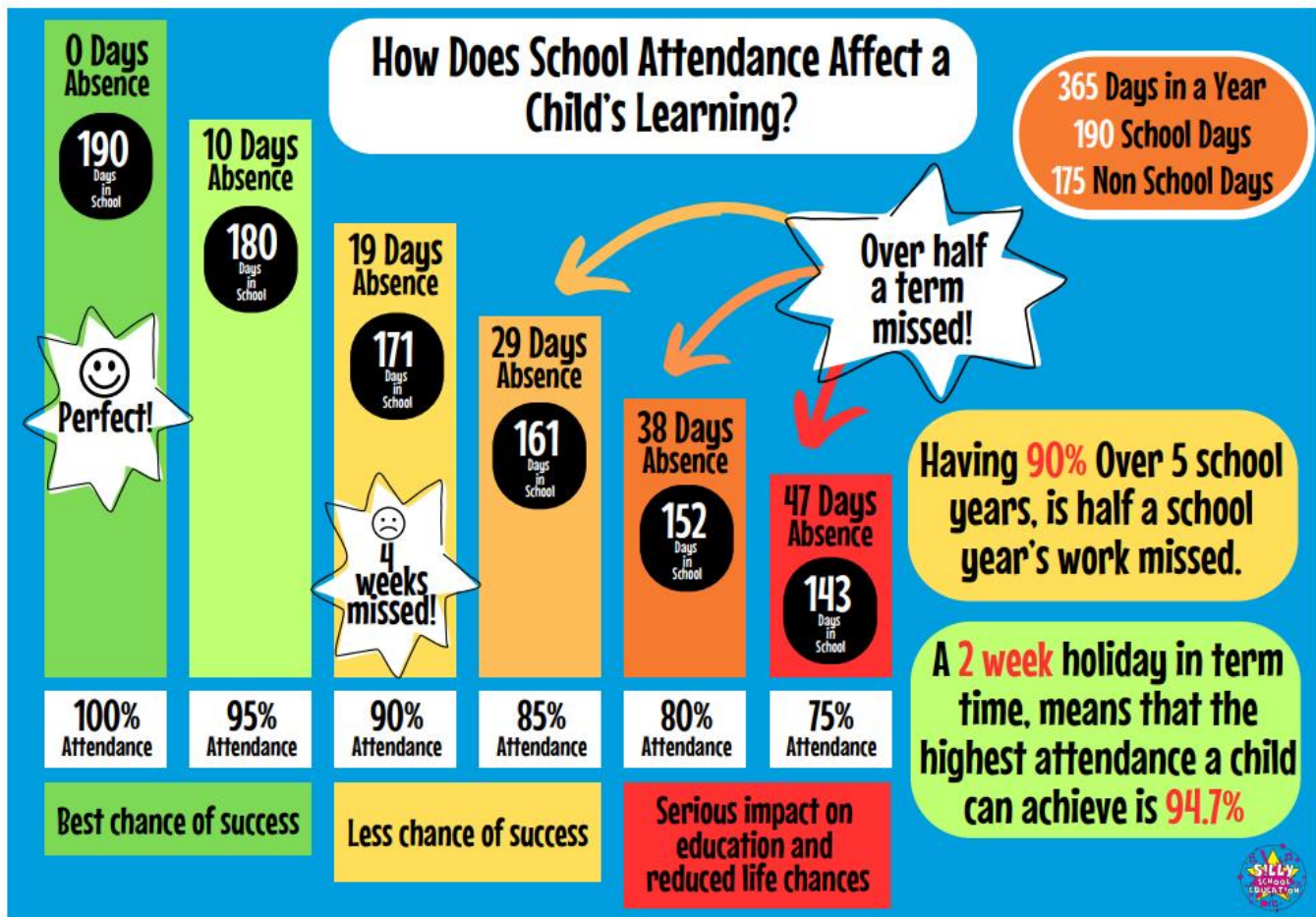
See you on gate, Liz Savage, Headteacher



John 10:10 Live life in all its fullness



Attendance



When children attend school consistently they are more likely to do well in their work but also build strong relationships and feel connected with the school community. It also demonstrates reliability which will help prepare children for life beyond education.

If your child is too ill to attend, you should inform the school and give them an idea of when they will return. It's important to stay in touch with the school about longer term illness so that they can work with you to minimise disruption to your child's learning.

You can report your child's absence on Weduc or leaving a message on our attendance line on 01344 301269 or secretary@jennetts.bonitas.org.uk

Reading Football Club's 2nd Schools and Grassroots Fixtures of 2023-24!

When?

Reading vs Barnsley
Saturday 9th December, 3pm

Where?

Select Car Leasing Stadium

How to qualify for the discount and confirm your attendance?

We would be delighted if you could join us for our 2nd schools and grassroots fixture of 2023-24. And as part of our special invitation, we would like to offer the below discounted prices:

12 and Under: £1

17 and Under: £3

18 to 24: £5

65 and over: £5

Adult: £10

To redeem, please visit <https://ticketing.readingfc.co.uk> and enter the following unique coupon code: **#JennettsParkCE** in the basket once you have logged in and selected your tickets.

Important! This offer applies to tickets in the Eamonn Dolan Stand blocks and Y19/Y20 of the Sir John Madejski Stand. Coupon codes are valid up until 4 hours before kick-off. If you have any questions about either offer, please email sales@readingfc.co.uk or call 0118 968 1313.

Apply for a school place!

The admissions process to apply for a Reception school place from September 2024 is now open.

The application process is open from
5 November 2023 - 15 January 2024

Visit www.bracknell-forest.gov.uk/applyforprimary or use the QR code to apply



Does your child's date of birth fall on or between 01 September 2019 - 31 August 2020



for more information.
Bracknell Forest residents only.

Outstanding Owl and Rainbow Promise Learners



Each week children are chosen for showing Owl learning behaviours or following our Rainbow Promise.



Our Rainbow Promise underpins everything we do at school. Just as the Rainbow was a sign of God's promise to Noah that from that moment God would enable Noah and the people of the earth to flourish and experience life in all its fullness. So as a school community we promise to do our best to enable all the pupils and adults of our school to flourish academically and professionally so that they might reach their potential.

The Rainbow is also a symbol of the diversity of our school community, but as a church school we recognise that we are all created and valued by God, and so as a school community we commit to care for and value each other.

The dove symbolises our need to persevere in some aspects of life as it is not always the first time we find success. It was not the first time that Noah had tried to find dry land and so we much seek strength within ourselves and from God to achieve.

 *Forgiveness*

 *Patience*

 *Support*

 *Kindness & Joy*

 *Love*

 *Honesty*

 *Respect*

 *Peace*

These are our Values we try to live each day

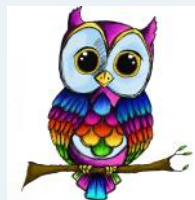
Our Owl Learning Behaviours:

C - Collaboration O - Optimism

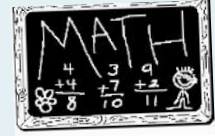
P - Perseverance P - Pride

I - Inspiration C - Challenge

MD - Managing Distractions



Pages for Children



Our Rainbow Moments this week

Our Owl Learners this week

Robins	Theo
Woodpeckers	Teigan
Stonechats	Harper
Whinchats	Haroon
Canaries	Isla
Yellowhammers	Freddie
Greenjays	George
Parakeets	Ben
Kingfishers	Max
Macaws	Kathleen
Mockingbirds	Jess
Peacocks	Levi R
Sabrewings	Benjamin
Sunbirds	Harry

Robins	Elan
Woodpeckers	Bella
Stonechats	Manvith
Whinchats	Alby
Canaries	Carter
Yellowhammers	Evie
Greenjays	Jack
Parakeets	Adam
Kingfishers	Abeeha
Macaws	Heitor
Mockingbirds	Leo
Peacocks	Ellis
Sabrewings	Frankie
Sunbirds	Harrison K

The Health Bus is coming!

Early Language Workshops

On **22nd November**, the Early Years Speech & Language Therapy Team will be visiting sites across Berkshire on the Health Bus. Our Speech & Language Therapists will be available for any questions between **1pm and 3pm** and will also be delivering workshops live between **1:30pm and 2:30pm**.



Please scan the QR code below for more information:



Waitrose

Rectory Rd,
Wokingham
RG40 1BB

22nd November, 1pm- 3pm



Upcoming Dates for your Diary

13th November	Odd Socks Monday
13th-17th November	Anti-bullying Week
15th November	YR-Y6 Reindeer Run assembly for Thames Hospice
16th November	Y6 Trip to London (evening) - The Witches
17th November	Y4 Sleepover Be a buddy, not a bully pledge day
20th November	Mufti Day for Christmas Fair
22nd November	School nurse—appts available 9:00-11:30am
22-24th November	Diwali Dance Workshops
27th November	Y4 Christmas Unwrapped (Kingfishers)
28th November	Y1/2 Book Look 2:30-3:30pm
29th November	Y3/4 Book Look 2:30-3:30pm
30th November	Y5/6 Book Look 2:30-3:30pm
1st December	Christmas Fair Reverse advent begins Pause Day
4th December	Y5 Geography Trip YN-1 Bigfoot Christmas Show
6th December	Y4 Christmas Unwrapped (Macaws)
7th December	YN-Y6 Reindeer Run
8th December	Christmas Jumper Day
14th December	YR-6 Christmas Dinner Day End of term—Nursery
15th December	YR-6 end of term 1:30pm

Term dates 23/24

Autumn Term 2023	
Half Term	Monday 23rd October to Friday 27th October
End of Term Nursery	Thursday 14th December 2023
End of Term	Friday 15th December 2023 1:30pm
Spring Term 2024	
Professional Training Day	Tuesday 2nd January 2024 Day 3
Start of Term	Wednesday 3rd January 2024
Half Term	Monday 12th February to Friday 16th February 2024
End of Term Nursery	Wednesday 27th March 2024
End of Term	Thursday 28th March 2024 1:30pm (Good Friday 29th March 2024, Easter Monday 1st April 2024)
Summer Term 2024	
Start of Term	Monday 15th April 2024
Half Term	May Bank Holidays 6th and 27th May 2024 Monday 27th May to Friday 31st May 2024
End of Term Nursery	Wednesday 17th July 2024
End of Term	Friday 19th July 2024
Professional Training Days	Monday 22nd July 2024 Day 4 Tuesday 23rd July 2024 Day 5 (Day 4&5 taken as staff TOIL)