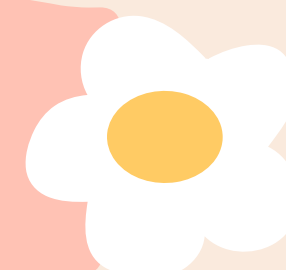
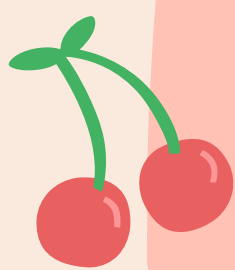




What do you want to say to new parents at JPCE



Be open and honest.
The school will work
with you, if you
have concerns raise
them

Kids are very happy
in the school and
that's more
important.

Don't compare
where your child is
to others they all
get it in their own
way/time

No question is a
silly one, the staff
are always
approachable and
incredibly helpful

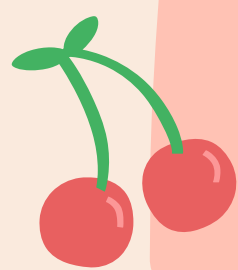
Amazing school
with great staff.
Highly recommended!

Label uniform! Add
schools event to a
calendar from each
week's newsletter

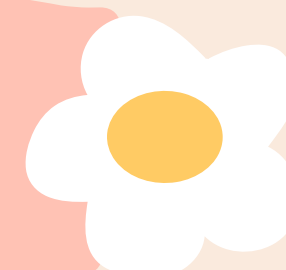




What do you want to say to new



parents at JPCE



Relax and feel confident in the knowledge and experience of others

Send your children to Jennetts Park CE and watch them flourish

It's a fantastic school and you will see big improvements fast

3 name labels per item of uniform is still never enough.

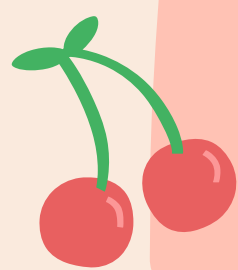
The school is amazing and I think deals very good with bullying.

If their child is unhappy to keep talking to the school until something is done.

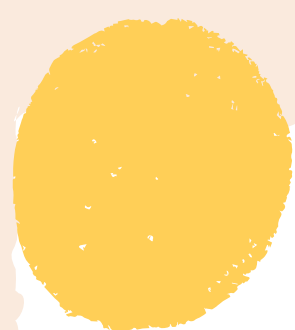
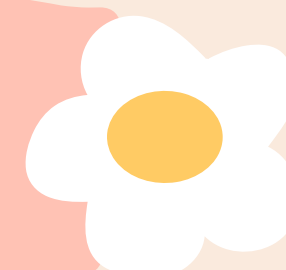




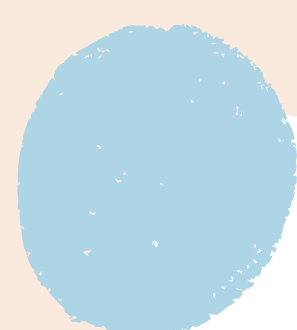
What do you want to say to new



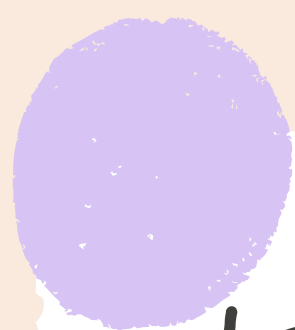
parents at JPCE



Lovely school, with
a community feel.



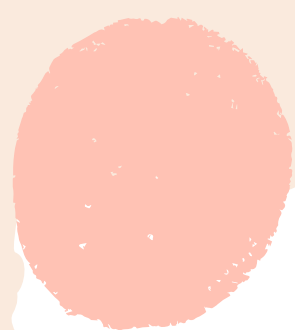
Lovely local school



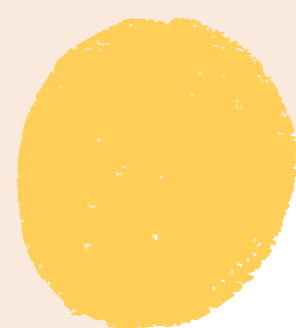
Label everything
and take what your
child says, first off,
with a large pinch
of salt!



The pastoral care at
the school is great,
any concerns talk to
the staff who are all
very helpful and
understanding.



Talk to the
teachers.

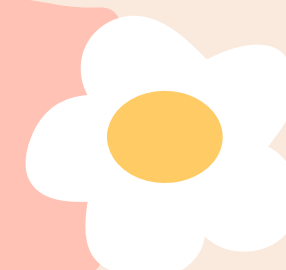
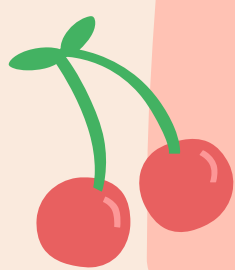


Welcome, enjoy all
the activities





What do you want to say to new parents at JPCE



Don't worry about a thing! The Nursery Staff go above and beyond to not only make sure the children are happy, but the parents are too!

Walk to school if you can as there is limited parking

Get into the habit of checking the newsletter each week, even if just for the dates section - that way you'll always know what's coming up!

It's a lovely school and my child blossomed here

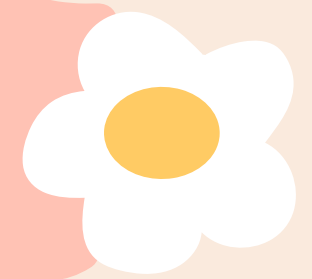
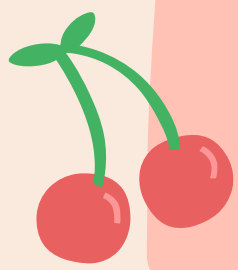
Sew name labels in everything

You need to work with the school in order to ensure that your child's needs are met





What do you want to say to new parents at JPCE



Ask questions, don't be afraid to raise issues and keep asking until you get the response you were hoping for.

Viewing is essential

Talk to the teacher or office if you have any questions as they are quick to help or reassure you

You won't regret sending your child/children here!!! Just watch them all going into school day in day out. Lots of very happy children.

Mid year transfers need to know:

- PE day, book change day.
- learn about Read Write Inc, how you assess levels/what level expectations are for the year group.
- Upcoming school trips, how to join. Not knowing feels stressful!
- Lunch ordering
- Class WhatsApp, Facebook stuff if they want to join. "