

# Jennett's Park CE Primary

Empowering our children to flourish  
and  
achieve under God's love  
John 10:10. Live life in all its fullness

# RESULTS OF 2022 QUESTIONNAIRE

Conducted July 2022  
Published September 2021



## Message from the Headteacher

As parents you entrust us with your children's education every day. We asked you many things at the end of the year and gained good insight on the most pressing things then but we asked to hear your opinion right now on our plans so far moving forward, what help you'd like from us and how we did across lockdown if you were with us..

Our goals this year are to focus on:

- Recovery and closing gaps
- Computing
- English
- Our healthy minds and bodies

There were over 120 family responses online to the questionnaire representing 165 children. We share these publicly here [Surveys & Feedback | Jennett's Park \(bonitas.org.uk\)](https://bonitas.org.uk/Surveys%20&%20Feedback%20|%20Jennett's%20Park)

You have on the last page a Year on Year comparison data for previous years. Some questions have changed but this is useful information to us. The ones in pink are our focus this year.

Thank you for your support- it is very heart-warming to hear. There were so many positive messages we actually made a whole page of them!

**65% of responders said we need not improve on anything.**

Communication continues to be an issue for a few. We have a few changes to help us in this coming to help with the admin / ICT site to reduce issues on clunky systems!

Similarly, parents have asked for more information on what is going on in class – please do come to our meet the teacher sessions.

If you wish to have a meeting with me regarding any personal issues please make an appointment via the office.

Regards Liz Savage

## We divided the questions into ones relating to

### 1) For Leadership and Management of the School we asked

- If you have raised concerns with the school they have been dealt with properly
- If the school values the views, wishes and feelings of parents
- If your child has SEND, if the school gives them the support they need to succeed

### 2) For the Behaviour and Safety of Pupils at the School we asked

- If your child is happy at this school
- If your child feels safe at this school
- If the school makes sure its pupils are well behaved
- If your child has been bullied and the school dealt with the bullying quickly and effectively
- If the school taught your child how to lead a healthy and active lifestyle and how to keep physically and mentally healthy
- If your child knows who to speak to if they are upset or unhappy at school
- If the school has clear routines and expectations for the behaviour of all pupils across all aspects of school life

### 3) For Ensuring Excellent Outcomes and Progress for All Children we asked

- If your child does well at this school
- If your child makes good progress

- If staff expected your child to work hard and do their best
- If the school had high expectations for your child
- If the school lets you know how your child is doing
- If the school supports your child's wider personal development
- If your child can take part in clubs and activities at this school

### 4) For The Quality of Teaching in the School

- If the school makes you aware of what your child will learn during the year
- If you thought your child was taught well
- If the school has high expectations for your child
- If there is a good range of subjects available to your child at this school

### 5) We also asked:

- If you would recommend this school to another parent
- Do you feel your child understands the Rainbow Promise Values?
- Do you feel your child(ren) understand the Owl Learning?
- We asked what do you like most about Jennett's Park CE Primary school?
- We asked what would you like us to do better at school?
- For any other comments

## Areas you thought we should improve on

Whilst we have improved again in most areas in Parents' and Carers' perceptions there are still some areas to focus on:

### 1) Leadership and Management of the School

As mentioned above to help communicate what is being learning in subjects 91% of parents felt we responded well to concerned raised. We want 100%

### 2) The Behaviour and Safety of Pupils at the School

63% of children said their children have never experienced bullying. Of the parents who responded 94% said that it was dealt with swiftly. We want 100%.  
That children to know who to talk to if upset- we have 99%. We want 100%  
90% of responders felt children were well behaved

### 3) Ensuring Excellent Outcomes and Progress for All Children

88% of people though their child did well but we want 100%  
87% of people thought their child made good progress but we want 100%

### 4) The Quality of Teaching in the School

The school makes me aware of what my child will learn (90% positive we want 100%) we will work to have even more information as to how children are progressing.

### 5) What would you like us to do better at school?

10% of responders still thought communication was an issue. We want 0%

## Areas you felt we did well

### 1) Leadership and Management of the School

- Communication
- That you would recommend this school to another parent 100%

### 2) The Behaviour and Safety of Pupils at the School

- My child is happy
- The school ensures children are well behaved
- My child is safe

### 3) Ensuring Excellent Outcomes and Progress for All Children

My child makes good progress

### 4) The Quality of Teaching in the School

My child is taught well at this school  
Staff expect my child to work hard and do his or her best

That you are aware of what they will learn

### 5) What do you like most about Jennett's Park CE Primary school?

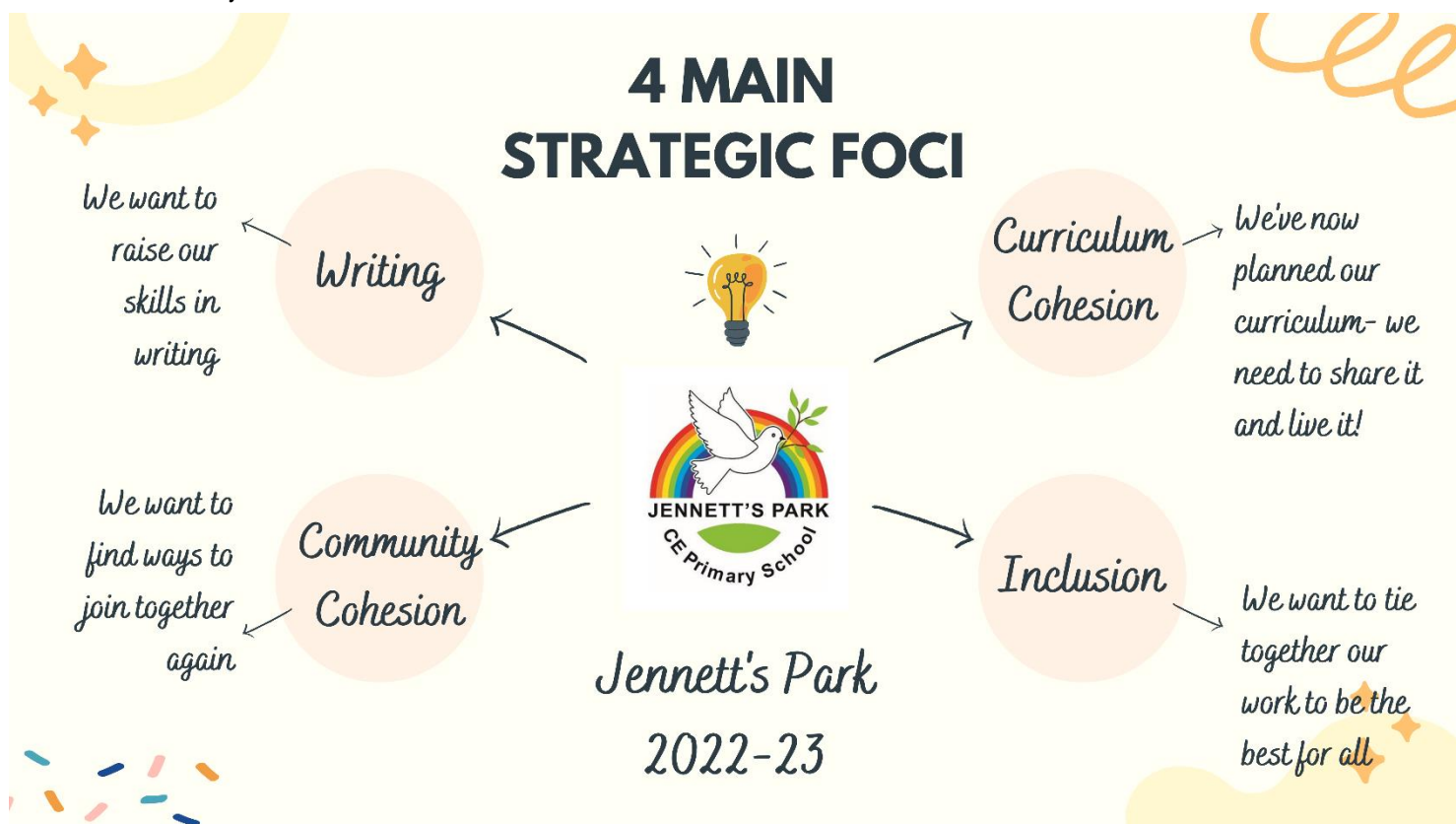
Inclusion, Leadership, Friendly staff  
Building, Rainbow Promise Owl  
Learners Community Feeling  
Proximity

## Actions so far

- Improved Yeargroup pages with comprehensive links to end of year data required
- Parents evening system set up to offer 10 min appointments via video with supportive written report
- Taken over afterschool club and wraparound care and reduced price of this from previous costs
- Worked on after half term menu of choices
- Purchased communication app to align the various strands together
- Additional meet the Teacher sessions Y1-Y6 planned and with a specific focus on end of year expectations, Homework and Reading.
- SEND meetings with Mrs Robinson Inclusion Leader Parents evening
- Set dates for Parent Representative Council meeting the Family Support Worker
- Workshops to support Parents of SEND with a range of professionals including Educational Psychologist and Family Support Worker

## Future plans

Our 4 foci this year are:



*Communication is important for us as at Jennett's Park CE Primary School to get right. If you have emailed [secretary@jennetts.bonitas.org.uk](mailto:secretary@jennetts.bonitas.org.uk) you will receive an acknowledgement email.*

# Parent Questionnaire 2022

We have tried to align questions where possible. These ratings reflect strongly agree, agree categories. Anything neutral or lower is counted as negative and scores are taken into account to remove those who deem themselves not applicable.

Questions	2018	2020	2022	Gap from first time asked	Not applicable to me
My child is happy at this school	90	96	94%	4	
My child feels safe at this school	86	97	98	14	
The school lets me know how my child(ren) is doing	39	87	96	57	
I receive valuable information from the school about my child's progress	48	93	85	37	
The school makes me aware of what my child will learn during the year	Not asked	84	96	12	
My child does well at this school	61	87	94	33	
Staff expect my child to work hard and do his or her best	78	94	94	16	
The school has high expectations for my child	Not asked	72	88	16	
There is a good range of subjects available to my child at this school	Not asked	98	99	1	
This school deals effectively with bullying	26	88	94	19	63%
This school ensures the pupils are well behaved	73	89	90	10	
The school has clear routines and expectations for the behaviour of all pupils across all aspects of school life	Not asked	94	99	5	
My child knows who to speak to if they are upset or unhappy at school	Not asked	94	99	5	
My child makes good progress at this school	68	87	94	26	
The school supports my child's wider personal development	Not asked	73	97	14	
My child can take part in clubs and activities at this school	Not asked	60	96	36	

The school teaches my child how to lead a healthy and active lifestyle and how to keep physically and mentally healthy	Not asked	86	99	13	
My child has SEND, and the school gives them the support they need to succeed	32	76	82	50	60%
This school responds well to any concern I raise	45	96	91	46	17%
The school values the views, wishes and feelings of parents	Not asked	95	99	4	
I would recommend this school to another parent	56	100	100	44	
Do you feel your child understands the Rainbow Promise Values?	Not asked	Not asked	98		
Do you feel your child(ren) understand the Owl Learning?	Not asked	Not asked	94		
<b>Number of responses</b>	75	109	120		
<b>Representing number of families</b>	94	125	165		



**John 10:10 Live life in all  
it's fullness**

Some anonymous positive feedback comments from Parental Questionnaires

**My children joined the school when it first opened its doors I love the community spirit that is around the school . All my children have loved their time of the school**

**The sense of community is what I love the most. My son's year 6 experience had been fantastic. It has ignited his enthusiasm for learning and for school in general.**

**We know you know our children and that they are safe and happy and seeing Mrs Savage or the other senior staff makes us feel valued**

**Thank you for your hard work-you all do such a fantastic job and we are proud to recommend you and only have positives to share**



**So far, absolutely everything. We've been here a year. The communication is superb, the encouragement brilliant, the passion shines through towards children and parents.**

**As we leave JP this summer after an 11 year cycle with both my daughters I want to thank you for providing them with such an excellent education in their primary years. They have both been lucky to be taught by xxxx Both staff will be remembered always by our girls and us as they have been amazing role models ensuring they achieved their very best. Their time at JP had been invaluable, they have learnt so much, upholding key values and life skills needed to take them into the next stages of their lives. Thank you so much for wonderful memories of their primary years, we will miss JP very much.**

**An absolutely fantastic school and all school treat everyone**

**We have been welcomed in to the school under our circumstances and the staff and pupils are so happy and lovely, smiling, and most of all supportive.**

<https://www.jennetts.bonitas.org.uk/school-office/surveys-feedback/>