



Jennett's Park CE Primary School

Head Teacher: Mrs Elizabeth Savage
3 Tawny Owl Square,
Jennett's Park, Bracknell RG12 8EB
T: 01344 301269

secretary@jennetts.bonitas.org.uk

Dear Parents and Carers,

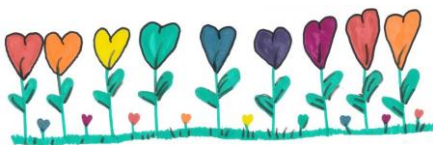
I'm writing to you today so that I may give you all an update on how the Governing Body of Jennett's Park School are carrying out their duties even while the school is partially closed.

As governors, our main goal is always to make sure that every child who attends Jennett's Park Primary School receives the very best education possible. That goal is no different right now. All governor meetings are continuing as planned, allowing us to question and challenge the Senior Leadership Team on the strategic impact of a range of subjects. This includes, but is not limited to making sure that:

- The remote learning policy is being adhered to throughout the school
- The risk assessment protecting all in school is robust and up to date in line with constantly changing guidance
- The school budget is being used appropriately and effectively
- making sure the most vulnerable members of our community are safeguarded
- Staff, pupil and parents' feedback is taken into account as we all learn how to manage these new ways to teach, learn and support our children.

A key priority for the governing body is the wellbeing of all of our school community. At this time, we are particularly focused on the wellbeing of our quite simply amazing team of staff. Over the last few weeks our committees have heard of how our staff have been juggling face-to-face teaching the growing number of children who have been attending school with making sure that the remote learning members of our community continue to receive appropriate work and feedback each day. On top of this they are constantly learning new ways to deliver this content, plus managing their own families and feelings during this difficult time. A question that is asked again and again by governors when we hear of these (quite honestly heroic) efforts to support our children is "how are they coping and can they sustain this level of effort?" We will carry on asking these questions and working with the Senior Leadership Team to make sure that every member of our community is supported to the best of our collective abilities.

Parents of children in Nursery and Reception will know that both of these years are currently not full and the bare bones of the situation is that empty seats means less money for the school, putting extra strain on our budget. Governors on our Admissions committee are working with the Senior Leadership Team to make changes that will update our provision to better meet the needs of our community as you will see in the school newsletter this week. Please tell friends



and family about us and if you see posts on social media asking about local schools we'd love you to give Jennett's Park Primary School a positive push!

Finally, please know that every member of our governing body are passionate about the small but important role we play in supporting and challenging our school leaders, to making sure that every child is empowered to flourish and achieve under God's love. Should you be interested in knowing more about how we go about this, or how you could be involved in the biggest group of volunteers in the country, please email the school so that your interest can be passed on.

Stay well and I'll look forward to seeing all of you once again on the playground and at school events as soon as it is safe to do so.

Yours faithfully,

Claire Tootill

Chair of Governors

