



Newsletter

Autumn Term

4th December 2020

secretary@jennetts.bonitas.org.uk

Dear Parents and Carers,

Reverse advent - We launched our Reverse advent on our Pause day, <https://www.jennettspark.bracknell-forest.sch.uk/reverse-advent-at-jennetts/>
Amazing news that we have been given £1333 from the Church to support this project! What a beautiful community you are!



Christmas Plans - Read our list of events on Page 2. For those who have asked we will make Christingles in class but won't be inviting in helpers for making them this year! Read a great letter from a schoolchild asking about Christmas with a response from the Prime minister on Page 3



Wintershall— We have a marvellous start to the advent season with our friends from Wintershall—see page 4.

We say goodbye at Christmas to Mrs Ilyas, Mrs Little and Mrs Harris. We thank you for all your help over the years.



Attached is our Extreme Weather plan on page 5 how to drop off and pick up. Obviously we don't wish for slippy conditions but if we are very icy it's best not to make you walk the entire site! We'll only activate this in EXTREME conditions where walking becomes treacherous.



Raffle for Kings College. We are pleased to announce we have received further donations and there are enough prizes to run a second raffle after Christmas. The first prize so far is a Switch Console!

2000 Miles

Christmas Lunch - Please keep an eye out for a communication on this.

Adverts - 2 x School Meal Supervisory Adult. Please see our website for details and spread the word far and wide! <https://www.jennettspark.bracknell-forest.sch.uk/staff/current-vacancies/>

Stay well and see you on the gate.

Elizabeth Savage
Headteacher



Christmas at Jennett's Park

Tis the season to be Jolly...

In this season more than ever we would love to celebrate you as our community and to spread the word of all that is good in the world.



Send my friend to school. Once again we've taken part in this amazing trip around the word Xmas Jumper day Silly Xmas jumpers / Red and Green clothes on 11th December. Pay £1 and we'll get the money to Save the children

Performances. We will have an EYFS Nativity and KS1 singing concert. Downloads of these will be available on the website to parents of children in those year groups. They'll be password protected.

Visiting theatre Our friends at M & M Productions can't come in so we've bought a recorded panto for children to watch. Details to follow

Christmas Dinner Details will be emailed out.

These will be followed by class parties—more details to you via Marvellous me & Squid

Reverse Advent This was hugely popular last year. This year we have help from the whole of JP community including our wonderful church to make it bigger and even better. There is a challenge competition for free donations too. See <https://www.jennettspark.bracknell-forest.sch.uk/reverse-advent-at-jennetts/>

Carols around the tree Will be done virtually details Topic: Virtual Carols

Time: Dec 14, 2020 04:00 PM London

Join Zoom Meeting

<https://us02web.zoom.us/j/84255663075?pwd=cHVmY1NvVnY0ZWFiTGg3M0xKWlZ2Zz09>

Meeting ID: 842 5566 3075

Passcode: 5VVaDG

Cards We love sending messages to each other at this time of year. In year group phases cards can be given to each other as usual. We just ask that they are just not opened in school. We will be still able to send cards across bubbles. If a child has a card to post across the school they will put it into our usual post-box. They will be quarantined. Then sorted and then quarantined again! Any cards going this way need to arrive at our postbox by Monday 14th at the very latest.



Dear Mr. Johnson

1/2

I am 8 years old and I was wondering if you and the government had thought about Santa coming this Christmas.

If we leave hand sanitiser by the cookies can he come? Or will he wash his hands?

I understand you are very busy but can you and the scientists please talk about this.

From Monti



10 DOWNING STREET
LONDON SW1A 2AA

2/2

THE PRIME MINISTER

24 November 2020

Dear Monti,

Many thanks for your letter which raises the very important question of whether Father Christmas will be able to deliver presents this year in spite of Coronavirus.

I know millions of other children are asking the same thing. Just to make sure, I have put in a call to the North Pole and I can tell you Father Christmas is ready and raring to go, as are Rudolph and all of the other reindeer.

The Chief Medical Officer has asked me to tell you that, provided Father Christmas behaves in his usual responsible way and works quickly and safely, there are no risks to your health or his.

Leaving hand sanitiser by the cookies is an excellent idea to help prevent the spread of the virus – and using it yourself, and washing your hands regularly, is exactly the kind of thing that will get you and your friends on the nice list.

Thank you again for your letter, and have a very Merry Christmas.

Boris Johnson

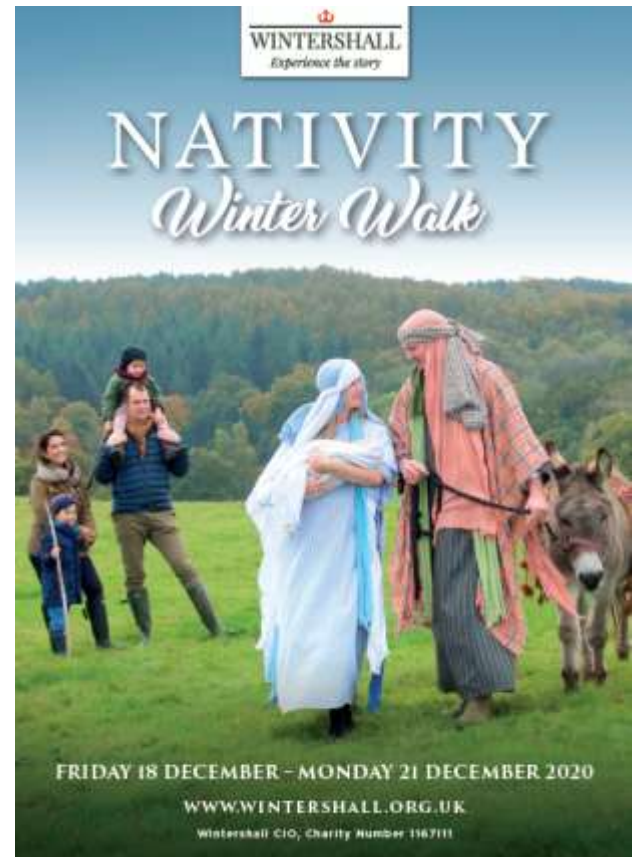
Wintershall

Do book your visit to Wintershall below

[Nativity Winter Walk | Wintershall](#)

Wintershall was a very enlightening experience, and every single person there was very friendly. I learnt much more about the Nativity story, and some of the more in-depth facts. The speeches given were very educational, and every one of them answered any questions we had. The questions they asked helped us get engaged, and they made sure we were able to get the full experience by telling us what we had in our bags and their deeper meaning. They tried their best to make sure we would always remember our trip, giving us souvenirs along the way (sheeps wool) and made sure we had fun by allowing us to pet the animals and feed them. The people there did everything they could to make us comfortable, offering seats and making sure we were warm. Overall, it was an amazing experience and I would do it again.

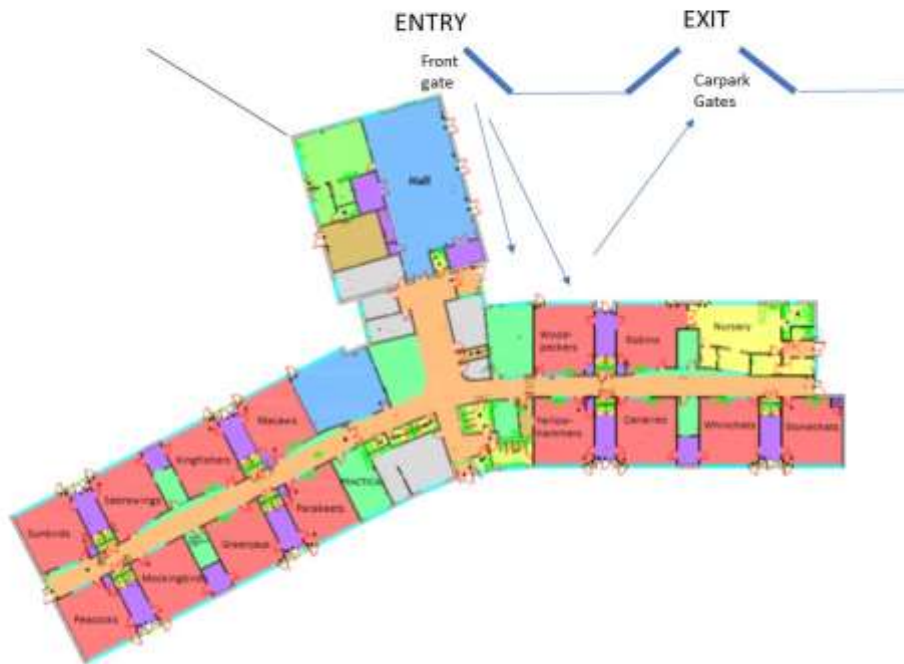
Holly H - Sunbirds



Plan for dropping off and collecting in EXTREME WEATHER

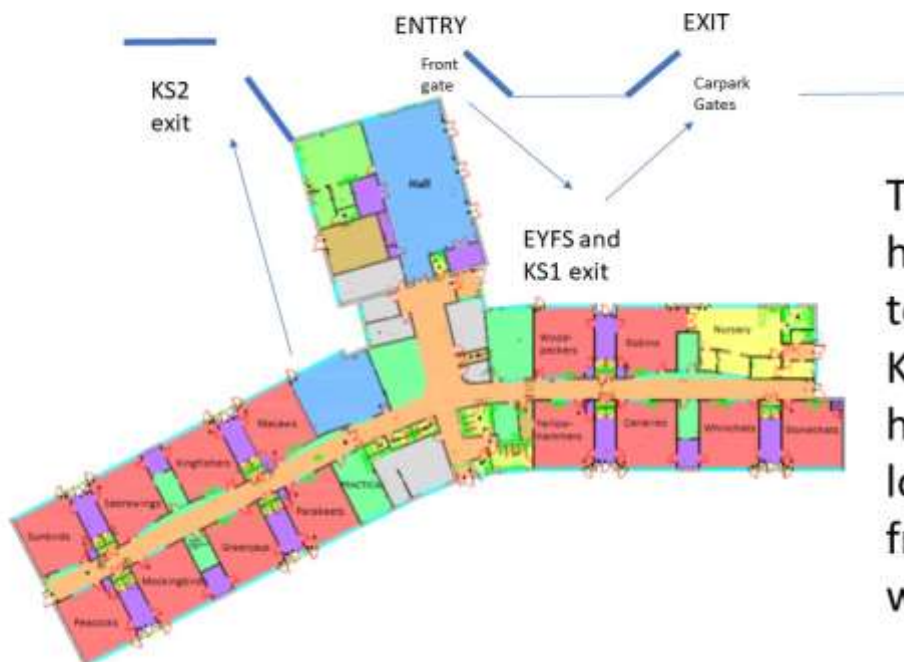


Beginning of Day SNOWY / ICY WEATHER PLANS



To stay safe we will have minimal entry to site to drop off

End of Day SNOWY / ICY WEATHER PLANS



To stay safe we will have minimal entry to site to pick up. KS2 and EYFS/ KS1 have different locations to release from to avoid walking the site

6 reasons why your PTA really matters



"I love to see my mum in school helping at the fun events the PTA run for us."



1. For the kids

Being active in the PTA not only improves your child's school but makes you an excellent role model. Research confirms what we've always known: when children see us involved in their school and learning, it encourages them to do their best.



"Through being a part of the PTA I've really got to know the school and have confidence in how to fit in."



2. It builds trust

Becoming part of the PTA is a great way to get to know other parents and teachers while gaining an insight into the workings of the school. With parents and teachers striving towards the same goals, the parent group is instrumental in making a real difference in the school life of all children.



"It's great that we finally have some decent kit at school for a change."



3. It raises welcome funds

Whether it's creating an outdoor classroom, stocking the science lab with new Bunsen burners or arranging a visit from a top author, the funds raised from your activities impact massively on the opportunities and experiences of all the children at school.

6 reasons why your PTA really matters



"It felt great when the head teacher asked the PTA for our views on the new school uniform policy. It made me feel listened to."



4. It gives you a voice

Many PTAs already act as a consultative group for the school leaders and governors. So whether it's deciding on where PTA funds are spent or getting parent views on wraparound care, you can make sure parents have a voice in how your school operates.



"We've been able to really grow the sale of the PTA with some great local contacts."



5. It forges connections beyond the school gates

PTAs are brilliant for building relationships with the local community, from events, sponsorships from local businesses, and mentions in local press. Some Parentkind members have worked with local employees to run career fairs.



"I've been able to use my design skills to help the school, it feels great to be able to make a difference."



6. It's good for you!

Every parent has plenty to offer a PTA, and whether it's being on the committee, helping out at events or organising meetings, your talents will be put to good use. As well as being enjoyable and satisfying, you can build your confidence and learn new skills too.

Attendance

Attendance should be 96% or above. Please note, the school will not authorise leave unless under exceptional circumstances if a child is over 5 years and therefore of statutory school age.

Absences

All absences should be reported by telephone or email before 9.30am. Thank you.

Well done Woodpeckers with 100% attendance this week.

Robins	98.8%
Woodpeckers	100%
Stonechats	99.3%
Whinchats	97.9%
Canaries	97.8%
Yellowhammers	94.3%

Greenjays	99.3%
Parakeets	99.3%
Macaws	93.1%
Kingfishers	99.3%
Peacocks	99%
Mockingbirds	98.5%
Sabrewings	97.6%
Sunbirds	99.6%



Our Rainbow Moments this week are.....

Robins	Clara
Woodpeckers	Emily C
Stonechats	Charlie S
Whinchats	Jake
Canaries	Cassie
Yellowhammers	Ethan
Greenjays	Oliver S
Parakeets	Dawson
Kingfishers	Jayden
Macaws	Zach
Mockingbirds	Josie
Peacocks	Megan R
Sabrewings	Whole Class
Sunbirds	Peter

Our Owl Learners this week are....

Robins	Alexa
Woodpeckers	Harrison K
Stonechats	Leo
Whinchats	Kurt
Canaries	Noah
Yellowhammers	Whole Class
Greenjays	Whole Class
Parakeets	Whole Class
Kingfishers	Whole Class
Macaws	Max N
Mockingbirds	Mia
Peacocks	Imogen
Sabrewings	Lily-Mae
Sunbirds	Stanley

Items we need at JPCE

Item	Deliver to
Plastic Bottle ends for yearly Remembrance display	Office
Puppets/ Dressing up clothes	Mrs Savage
Lego	Office
Storage boxes/ trolleys	Office
Labelled plants and seedlings for around school	Mrs Savage
Prams	EYFS
Clean Toys	Drop off table

Jennett's Park CE Trips and Activities 2020-21

Last year we started to have all our trips paid for upfront. In line with other schools in Bracknell we changed so that our request for money towards trips are set and outlined at the start of the year so that people can budget at the start of the year and plan accordingly. This does not mean that we will choose or announce our visits at the start of the year (the names given below are only a typical trip indication). We normally aim for one external trip and one internal visit per year. We have had to adjust for the pandemic.

In 2018-19 we also sourced over 10 free trips and visits to enhance the curriculum. Last year even with the pandemic MOST year groups had full trips organised. We have reduced the cost this year to £30 per child across EYFS, KS1 and KS2. This can be payable in one or two lump sums or pay as you go via sQuid. This may not cover the costs of trips entirely.

Trip donations are voluntary. As a school we aim to break even on costs of trips and visits but last year with this approach we met 82% average. The previous year we only had 42% of parents paying donations overall and this led to a shortfall of over £8000. Our cut off limit for donations remains at 75% before we cancel the planned activity. We did not cancel any trips last year, but will do so moving forward if there is not enough take up. We do not ask, unlike other schools, for donations to resources funds in addition to this.

Each year group will plan and set dates for events across the year and inform you as soon as possible. For those who do not wish to pay upfront, each trip would be costed accordingly.

Each year group at the end of the year will receive a breakdown of spending and any unspent funds directed to THAT year group cohort (i.e. if they move from Year 3 to 4 the remaining money would travel with them.) If a child leaves and money is unspent a reasonable proportion will be refunded in relation to what had already been spent. Those requesting to do so will have a smaller amount to pay this year. A similar rationale is applied in Year 6. Many chose to donate the remainder to funds. We are grateful to you!

The school fundraises for any shortfall over 75%. The costs of whole school events are already listed below and fall outside of the year group events. Additional items such as Residential and musical instruments are also listed as separate to this.

Payment offers will be available in December on sQuid for year groups and those whole school events listed below.

Year N- Y6 Trips Planning Set budget to not exceed

2 x Theatre workshop 1 x Cultural activity 1 x Drama experience. Where possible this year we will aim to have external trips. Within this cost this year we will pay for Arts week, International, World of Work and Black History month celebrations. We have used money from Sports Grant to subsidise those linked to healthy lifestyle eg Golf and Skipping

Additional costs for year groups	Approx. costings
Year 1	£100
Year 2	£100
Year 3	£100
Year 4	£100
Year 5	£100
Year 6	£100
Year 7	£100
Year 8	£100
Year 9	£100
Year 10	£100
Year 11	£100
Year 12	£100
Year 13	£100
Year 14	£100
Year 15	£100
Year 16	£100
Year 17	£100
Year 18	£100
Year 19	£100
Year 20	£100
Year 21	£100
Year 22	£100
Year 23	£100
Year 24	£100
Year 25	£100
Year 26	£100
Year 27	£100
Year 28	£100
Year 29	£100
Year 30	£100
Year 31	£100
Year 32	£100
Year 33	£100
Year 34	£100
Year 35	£100
Year 36	£100
Year 37	£100
Year 38	£100
Year 39	£100
Year 40	£100
Year 41	£100
Year 42	£100
Year 43	£100
Year 44	£100
Year 45	£100
Year 46	£100
Year 47	£100
Year 48	£100
Year 49	£100
Year 50	£100
Year 51	£100
Year 52	£100
Year 53	£100
Year 54	£100
Year 55	£100
Year 56	£100
Year 57	£100
Year 58	£100
Year 59	£100
Year 60	£100
Year 61	£100
Year 62	£100
Year 63	£100
Year 64	£100
Year 65	£100
Year 66	£100
Year 67	£100
Year 68	£100
Year 69	£100
Year 70	£100
Year 71	£100
Year 72	£100
Year 73	£100
Year 74	£100
Year 75	£100
Year 76	£100
Year 77	£100
Year 78	£100
Year 79	£100
Year 80	£100
Year 81	£100
Year 82	£100
Year 83	£100
Year 84	£100
Year 85	£100
Year 86	£100
Year 87	£100
Year 88	£100
Year 89	£100
Year 90	£100
Year 91	£100
Year 92	£100
Year 93	£100
Year 94	£100
Year 95	£100
Year 96	£100
Year 97	£100
Year 98	£100
Year 99	£100
Year 100	£100

Voluntary purchase of own Musical Instruments eg Guitar/Recorder depends on musical instruments

*Year 5 Residential £45

*Year 5 Swimming approx. £30 for travel

*Year 6 Residential approx £400

*Not confirmed and estimated amounts

Ks2 Wintershall- Life of Christ Approx £20

EYFS + Ks1 Wintershall Nativity	Approx £15
---------------------------------	------------

Padlet Pages

Just a reminder that we have created websites for the KS2 children to post their own personal book reviews of the exciting texts they are currently reading! This is a great opportunity for the children to discuss the books they bought at the Book Fair and recommend them to their peers and teachers.

Each year group in KS2 has been assigned their own Padlet page (basically a web page), where the children can post their book reviews. We have taken safety precautions, so that every pupil can access their year group page, but they must type in a code to post. The page for every child is : JP2020

Year 6: <https://padlet.com/amerrills/jpyear6reviews>

Year 5: <https://padlet.com/amerrills/jpyear5reviews>

Year 4: <https://padlet.com/amerrills/jpyear4reviews>

Year 3: <https://padlet.com/amerrills/jpyear3reviews>

The pages will be regulated by myself, and class teachers, who all have access to the pages.

This is an innovative way to encourage the children to read, and discuss books, and hopefully further encourage a love of reading.

We monitor the book reviews regularly and are currently on the hunt for our 'Book review of the Term', which will feature in our Reading Newsletter in January. There are only three Reading Newsletters published each year, so only three children will receive the honour of having their review published for all of the children and adults of JPCE to see! We will be looking for exciting book reviews and suggestions!

Outstanding Owl and Rainbow Promise Learners

Each week children are chosen for showing Owl learning behaviours or following our Rainbow Promise.



Our Rainbow Promise underpins everything we do at school. Just as the Rainbow was a sign of God's promise to Noah that from that moment God would enable Noah and the people of the earth to flourish and experience life in all its fullness. So as a school community we promise to do our best to enable all the pupils and adults of our school to flourish academically and professionally so that they might reach their potential.

The Rainbow is also a symbol of the diversity of our school community, but as a church school we recognise that we are all created and valued by God, and so as a school community we commit to care for and value each other.



The dove symbolises our need to persevere in some aspects of life as it is not always the first time we find success. It was not the first time that Noah had tried to find dry land and so we much seek strength within ourselves and from God to achieve.

These are our Values we try to live each day

♥ Love



Honesty

/// Respect

☮ Peace

☞ Forgiveness

⌚ Patience



Support

☺ Kindness & Joy

Our Owl Learning Behaviours are:

C - Collaboration

O - Optimism

P - Perseverance

P - Pride

I - Inspiration

C - Challenge

MD - Managing Distractions



Dates for your Diary

Wednesday 9th December 2020	Early Years Christmas Nativity - released online 2pm (includes afternoon Nursery)
Friday 11th December	Christmas Jumper day for save the children
Monday 14th December 2020	KS1 Christmas Performance released online - 10.00am
Tuesday 15th December 2020	Reception, Year 1 and Year 2 Christmas Dinner
Wednesday 16th December 2020	Year 3 and Year 4 Christmas Dinner
Thursday 17th December 2020	Year 5 and Year 6 Christmas Dinner
Friday 18th December 2020	LAST DAY OF TERM - 1.30pm
Monday 4th January 2021	INSET DAY
Tuesday 5th January 2021	Children Return to School
Thursday 21st January 2021	School Census Day
Monday 1st February 2021	LGBT + History Month
Tuesday 9th February 2021	Safer Internet Day
Friday 12th February 2021	Chinese New Year
Monday 15th –19 February 2021	HALF TERM
Monday 22nd February 2021	Children Return to School
Thursday 4th March 2021	World Book Day
Monday 8th March 2021	International Women's Day
Tuesday 9th March 2021	Parents Evening tbc
Thursday 11th March 2021	Parents Evening tbc
Tuesday 16th March 2021	Year 3/4 Performance times tbc
Wednesday 17th March 2021	Year 3/4 Performance times tbc
Thursday 1st April 2021	END OF TERM - 1.30pm
Monday 19th April 2021	INSET DAY
Tuesday 20th April 2021	Children Return to School
Thursday 22nd April 2021	Earth Day and Green Day
Monday 24th May 2021	Art Week
Wednesday 26th May 2021	Pause Day
Monday 31st May to Friday 4th June 2021	HALF TERM
Monday 7th June 2021	Children return to school
Friday 11th June 2021	Sports Day
Friday 18th June 2021	Reserve Sports Day
Monday 21st June 2021	International Week
Wednesday 30th June 2021	Ready for Life Day - Year 6
Friday 2nd July 2021	Sports Day Extra Reserve Day
Tuesday 13th July 2021	Yr 6 Summer Performance 4pm
Thursday 15th July 2021	Yr 6 Summer Performance - 6pm
Friday 16th July 2021	Yr 6 Leavers Service - 9.30 am
Monday 19th July 2021	Grand Day In - Whole School Picnic
Tuesday 20th July 2021	TERM ENDS - 1.30pm

Term Dates 2020/2021

Spring Term 2021	
Professional Training Day	Monday 4 th January 2021 Day 3
Start of Term	Tuesday 5 th January 2021
Half Term	Monday 15 th February - Friday 19 th February 2021
End of Term	Thursday 1 st April 2021 1:30 pm
Professional Training Day	Monday 19 th April 2021 Day 4
Start of Term	Tuesday 20 th April 2021
Half Term	Monday 31 st May - Friday 4 th June 2021
End of Term	Tuesday 20 th July 2021 1:30 pm
Professional Training Day	Wednesday 21 st July 2021 Day 5

Term Dates 2021 2022

Autumn Term 2021	
Professional Training Days	Wednesday 1 st September 2021 Day 1
Start of Term	Thursday 2 nd September 2021 Children return
Half Term	Monday 25 th October - Friday 29 th October 2021
End of Term	Friday 17 th December 2021
Spring Term 2022	
Professional Training Day	Monday 3 rd January 2022 Day 2
Start of Term	Tuesday 4 th January 2022
Half Term	Monday 14 th February - Friday 18 th February 2022
End of Term	Friday 1 st April 2022
Summer Term 2022	
Professional Training Day	Tuesday 19 th April 2022 Day 3
Start of Term	Wednesday 20 th April 2022
Half Term	Monday 30 th May - Friday 3 rd June 2022
End of Term	Wednesday 20 th July

FACILITIES FOR HIRE

AT JENNETT'S PARK CE PRIMARY SCHOOL

OPENING TIMES

Mon – Fri 3.30pm – 8pm

Sat – Sun 8am – 8pm

Open all year round

Prices are per hour unless stated

Events may be charged more. For up to date prices see our website.

Minimum booking periods: Mon - Fri, 1 hour & Sat- Sun, 2 hours

Visit our website for more information about facilities and 'What's on' at this venue.

www.jennettpark.bracknell-forest.sch.uk

	Registered Charities & Voluntary Associations, Local Education & Recreation Groups.	Private (Non-Commercial) – Residents of Jennett's Park, Wykery Copse & Peacock Cottages.	Any Commercial Hire and/or Business Enterprises
	Charge Per Hour	Charge Per Hour	Charge Per Hour
	Minimum Rate of:	Minimum Rate of:	
	Weekdays & Weekends	Weekends & Half Terms	Weekends & Half Terms
School Hall	£20	£30	£40
Classroom	£10	£15	£20
Music Room	£10	£15	£20
School Field	£20	£30	£40
MUGA	£20	£30	£40
Dance Studio	£32	£48	£64



If you come into the building please check in



Test and Trace

LET'S HELP STOP THE SPREAD OF CORONAVIRUS



Scan this QR code with your
NHS COVID-19 App to check-in



Jennett's Park CE Primary School

Jennetts Park Primary School, 3 Tawny Owl Square, RG12 8EB

**DOWNLOAD THE
NHS COVID-19 APP**



COVID-19

Coronavirus Symptoms



12 November 2020

SERIOUS COVID-19 SYMPTOMS REQUIRING IMMEDIATE MEDICAL CARE

- If you develop any of these symptoms, call your healthcare provider or health facility and seek medical care immediately.
- This is not an exhaustive list. These are the most common symptoms of serious illness, but you could get very sick with other symptoms – if you have any questions, call for help immediately.



Shortness of
breath/ Difficulty
breathing



Loss of speech
or mobility or
confusion



Chest pain

MOST COMMON SYMPTOMS



Fever



Cough



Tiredness



Loss of taste
or smell

LESS COMMON SYMPTOMS



Sore throat



Headache



Aches
and pains



Diarrhea



A rash on the skin
or discolouration
of fingers or toes



Red or
irritated eyes

PLEASE NOTE:

- If you live in an area where malaria, dengue or other infections are common and you have any of above symptoms, seek immediate medical care according to the local health authorities.
- Stay in touch with your primary care provider to ensure you continue to receive the routine care you need, such as medication refills, follow-ups and other routine consultations.

Covid-19 related pupil absence
A quick reference guide for parents

What to do if	Action Needed	Return to school when.....
My Child has Covid-19 symptoms: <ul style="list-style-type: none"> HIGH TEMPERATURE – this means you feel hot to touch on your chest or back. A NEW CONTINUOUS COUGH – this means coughing a lot more than an hour, or 3 or more coughing episodes in 24hrs. A LOSS OR CHANGE TO YOUR SENSE OF SMELL OR TASTE – this means you've noticed you cannot smell or taste anything. 	DO NOT COME TO SCHOOL Contact school to inform us. Self-isolate the whole household for 14 days. Get a test. INFORM SCHOOL IMMEDIATELY ABOUT TEST RESULTThe test comes back negative
My Child tests positive for covid-19.....	DO NOT COME TO SCHOOL Contact school to inform us. Agree an earliest date for possible return. Minimum of 10 days. Self-isolate the whole household for 14 days. Bubble isolates/remote learning.They feel better. They can return after 10 days even if they have a cough or loss of taste/smell. These symptoms can last for several weeks.
My Child tests negative	CONTACT THE SCHOOL Discuss when your child can come back to school (same day/next day)The test comes back negative.
My child is ill with symptoms not linked to covid-19	FOLLOW USUAL SCHOOL ABSENCE POLICY PROCEDURE	After 48hrs following the last bout of sickness/diarrhoea if this is the cause of absence
Someone in my household has covid-19 symptoms	DO NOT COME TO SCHOOL Contact school. Self-isolate the whole household for 14 days. Household members to get tested. INFORM SCHOOL IMMEDIATELY ABOUT TEST RESULTSThe test comes back negative.
Someone in my household tests positive for covid-19	DO NOT COME TO SCHOOL Contact school. Agree an earliest date for possible return. Minimum of 14 daysThe child has completed 14 days of isolation
NHS test & trace has identified my child has been in close contact of someone with symptoms of confirmed covid-19	DO NOT COME TO SCHOOL. CONTACT SCHOOL Agree an earliest date for possible return. Minimum of 14 daysThe child has completed 14 days of isolation
We/my child has travelled and has to self-isolate as a period of quarantine.	Do not take unauthorised leave in term time. Consider quarantine requirements and FCO advice when booking travel. Returning from a destination where quarantine is needed. Agree an earliest date for possible return. Minimum of 14 days from return date. Self-isolate the whole household.The quarantine period of 14 days has been completed
We have received medical advice that my child must resume shielding	DO NOT COME TO SCHOOL. CONTACT SCHOOL Shield until you are informed that restrictions are lifted and shielding is paused again.School inform you that restrictions have been lifted and your child can return to school.
My child's bubble is closed due to a covid-19 outbreak in school.	DO NOT COME TO SCHOOL. At home support your child with remote education provided by school. Your child will need to isolate for 14 days.School will inform you when the bubble will be reopened.

Click here for a link to a larger copy

SYMPTOMS	COVID-19	COLD	FLU	ALLERGIES
FEVER	Common	Rare	Common	Sometimes
TIREDNESS	Sometimes	Sometimes	Sometimes	Common
COUGH	Common	Mild	Common(dry)	Sometimes
SNEEZING	No	Common	No	Common
ACHES & PAIN	Sometimes	Common	Common	No
RUNNY NOSE	Rare	Common	Sometimes	Common
SORE THROAT	Sometimes	Common	Sometimes	No
DIARRHOEA	Rare	No	Sometimes	No
HEADACHE	Sometimes	Rare	Common	Sometimes
ADDITIONAL	Shortness of breath, difficulty breathing, loss of taste/smell	Sinus congestion/watery eyes		