

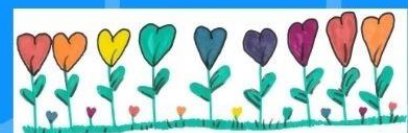
Empowering children to flourish and
achieve under God's Love



John 10:10 Live life in all its fullness

RESULTS OF PARENTAL QUESTIONNAIRES

**CONDUCTED SEPTEMBER
2020
PUBLISHED OCTOBER 2020**



Message from the Headteacher

As parents you entrust us with your children's education every day. We asked you many things at the end of the year and gained good insight on the most pressing things then but we asked to hear your opinion right now on our plans so far moving forward, what help you'd like from us and how we did across lockdown if you were with us..

Our goals this year are to focus on:

- Recovery and closing gaps
- Computing
- English
- Our healthy minds and bodies

We have full plan ready to share to you next week on how we'll address these aspects. It was pleasing to hear that you felt we had chosen the right elements but want to know how you can help.

There were over 109 family responses online to the questionnaire. We will have a children's questionnaire late on this term once things are more settled. We share these publically here <https://www.jennettpark.bracknell-forest.sch.uk/surveys-feedback/>

You have on the last page a Year on Year comparison data for the past three years. Some questions have changed but this is useful information to us. The ones in pink are our focus this year.

Thank you for your support- it is very heart-warming to hear. There were so many positive messages we actually made a whole page of them! <https://sway.office.com/MLJjCCdxkOBJgxBk?ref=Link&loc=play>

28% of responders said we need not improve on anything.

Communication remains a divided question amongst us. 25% say that it is excellent- 20% strongly disagree. Similarly with communication surrounding Special Needs. I am sorry anyone feels there are gaps. I will write a communication policy to help put our approach at Jennett's Park clearly to us all.

Similarly, parents have asked for more information on what end of year targets are so that they may help. In relation to work over lockdown 86% felt there was enough work – but we hear those who would like more and are planning for that. We have a recovery policy to be published to fully share our promise.

I have begun to contact those few people who are asking for support through this. If you wish to have a meeting with me regarding any personal issues please make an appointment via the office.

Regards Liz Savage

We divided the questions into ones relating to

1) For Leadership and Management of the School we asked

- If you have raised concerns with the school they have been dealt with properly
- If the school values the views, wishes and feelings of parents
- If the SENCO is approachable and supports my child's learning in school
- If your child has SEND, if the school gives them the support they need to succeed
- If you were new to us in Nursery or Reception if the arrangements for your child to settle in to their new class were clear

2) For the Behaviour and Safety of Pupils at the School we asked

- If your child is happy at this school
- If your child feels safe at this school
- If the school makes sure its pupils are well behaved
- If your child has been bullied and the school dealt with the bullying quickly and effectively
- If the school teaches my child how to lead a healthy and active lifestyle and how to keep physically and mentally healthy
- If your child knows who to speak to if they are upset or unhappy at school
- If the school has clear routines and expectations for the behaviour of all pupils across all aspects of school life

3) For Ensuring Excellent Outcomes and Progress for All Children we asked

- If your child does well at this school
- If your child makes good progress

- If the school lets you know how your child is doing
- If the school supports your child's wider personal development
- If your child can take part in clubs and activities at this school

4) For The Quality of Teaching in the School

- If the school makes you aware of what your child will learn during the year
- If the school has high expectations for my child
- If there is a good range of subjects available to my child at this school
- If the school supports a love of books and reading
- If the school supports a love of maths

5) We also asked:

- If you would recommend this school to another parent
- We asked during lockdown:
 - if you thought the school gave you enough work
 - if the school provided guidance
 - if you could contact the school for help
 - if you knew what to do on return to school to stay safe
- We asked for your opinion on our 4 aims and what help you needed
- We asked how you'd like to meet if not face to face.
- We asked what do you like most about Jennett's Park CE Primary school?
- We asked what would you like us to do better at school?

Areas you thought we should improve on

Whilst we have improved again in most areas in parents perceptions there are still some areas to focus on:

1) Leadership and Management of the School

76% of parents with SEND thought that their child was given the support to succeed. We want 100%

2) The Behaviour and Safety of Pupils at the School

60% of children DID not experience bullying. Of the parents who responded 88% said that it was dealt with swiftly. We want 100%.

3) Ensuring Excellent Outcomes and Progress for All Children

87% of people though their child did well but we want 100%

87% of people thought their child made good progress but we want 100%

4) The Quality of Teaching in the School

The school makes me aware of what my child will learn (87% positive we want 100%) we will work to have even more information as to how children are progressing.

60% of parents felt that they could access clubs and activities

73% felt the school supported wider development

5) What would you like us to do better at school?

20% of responders still thought communication was an issue.

Areas you felt we did well

1) Leadership and Management of the School

- Communication
- That you would recommend this school to another parent
- That the arrangements for your child to settle in to their new class were good

2) The Behaviour and Safety of Pupils at the School

- My child is happy
- The school ensures children are well behaved
- My child is safe

3) Ensuring Excellent Outcomes and Progress for All Children

My child makes good progress

4) The Quality of Teaching in the School

My child is taught well at this school
Staff expect my child to work hard and do his or her best

5) What do you like most about Jennett's Park CE Primary school?

Inclusion, Leadership, Friendly staff
Building, Rainbow Promise Owl
Learners Community Feeling
Proximity

Actions so far

- Improved Yeargroup pages with comprehensive links to end of year data required
- Recovery approach published for first 6 weeks
- Parents evening system set up to offer 10 min appointments via video with supportive written report
- In friendship week for a focus on Esafety

Future plans

- Publish our Communication policy
- Publish Recovery Plans
- Publish Remote Learning Policy
- Additional meet the Teacher sessions Y1-Y6 planned and with a specific focus on end of year expectations, homework and Reading.
- Set dates for Parent Representative Council meeting the senior team via Zoom
- SEND meetings with Mrs Robinson and Mrs Ilyas (SENDCOs) via zoom
- Workshops to support Parents of SEND with a range of professionals including Educational Psychologist and Family Support Worker
- Work with school council and parent council on which clubs to offer when safe

Communication is important for us as at Jennett's Park CE Primary School to get right. If you have emailed secretary@jennettpark.bracknell-forest.sch.uk you will receive an acknowledgement email.



**John 10:10 Live life in all
it's fullness**

Parent Questionnaire 2020

We have tried to align questions where possible. These ratings reflect strongly agree, agree categories. Anything neutral or lower is counted as negative and scores are taken into account to remove those who deem themselves not applicable.

Previous questions	2018	2019	2020	2020 questions	Gap from 2018
My child is happy at this school	90	90	96	My child is happy at this school	6
My child feels safe at this school	86	92	97	My child feels safe at this school	11
My child makes good progress at this school	68	85	87	My child makes good progress at this school	19
My child is taught well at this school	61	83	87	My child does well at this school	26
This school ensures the pupils are well behaved	73	80	89	The school makes sure its pupils are well behaved	16
This school deals effectively with bullying	26	75	88	My child has been bullied and the school dealt with the bullying quickly and effectively	62
This school responds well to any concern I raise	45	79	96	When I have raised concerns with the school they have been dealt with properly	51
I receive valuable information from the school about my child's progress	48	77	93	The school lets me know how my child is doing	45
I would recommend this school to another parent	56	81	100	I would recommend this school to another parent	44
I am kept informed about how my child is getting on	39	73	87	The school makes me aware of what my child will learn during the year	48
Staff expect my child to work hard and do his or her best	78	85	94	The school has high expectations for my child	16
NURSERY and RECEPTION PARENTS ONLY – The arrangements for my child to settle in to their new class were clear	35	85	95	Were you new to us in Nursery or Reception? The arrangements for my child to settle in to their new class were clear	60

How do you want us to communicate if we can't meet face to face?				New questions for 2020	
Phone calls	76		76	My child has SEND, and the school gives them the support they need to succeed	
Online 1:1 via zoom / teams etc	78		98	There is a good range of subjects available to my child at this school	
Webinar style (with more families)	40		60	My child can take part in clubs and activities at this school	
Q & A documents	71		72.5	The school supports my child's wider personal development	
Written update	91		85.5	The school teaches my child how to lead a healthy and active lifestyle and how to keep physically and mentally healthy	
Marvellous Me/ Tapestry / Seesaw	83		94.2	My child knows who to speak to if they are upset or unhappy at school	
			93.6	The school has clear routines and expectations for the behaviour of all pupils across all aspects of school life	
			94.5	The school values the views, wishes and feelings of parents	
During lockdown					
The school gave enough work	84.3		86	The SENCO is approachable and supports my child's learning in school	
The school provided guidance to us	89		99.1	The school supports a love of books and reading	
I could contact the school for help	98.1		96.3	The school supports a love of maths	
We knew what to do on return to school to stay safe	99.1				

Some anonymous positive feedback comments from Parental Questionnaires

The community feel. I know my child is looked after and cared for. I really feel the children's best interests are at the heart of all decisions. My son's education is flourishing in that environment.

XXX and XXX really enjoy going to the school. The school has clear routines and expectations for the behaviour of all pupils. Some teachers are exceptionally good. We love Tapestry as it allow us to have a better understanding of what xxx is doing on a weekly basis and it allows us to communicate with the teachers.

JP is an amazing school! The level of care the staff provide to our son is second to none and he is incredibly happy! I would happily recommend JP to any parents searching for an inclusive and nurturing environment for their child.

I believe that the values being transferred to the children are a great initiative of the school and I share the hope that better citizens are being brought up for the world. Congratulations to all of you!



We love how lovely and amazing the staff are - especially in these challenging times! They always make time for everyone and they genuinely care, and that is all you can ask for in a school! All 3 boys love it there!

[Click here for more](#)

The staff are very approachable; there is open and transparent feedback - which is a gift. Personally, we are so please with the support our son gets who has Special Educational Needs. His progress is a testament of the hard work from the staff, the transparency in communication between the school and us. We also feel the school is disciplined and under great leadership the past years.

That bullying and bad behaviour isn't tolerated

The Ethos for the school is really great, it's not just about learning the subjects but about learning to be an all rounded person.

The flow of information is usually very good, the updates are really great to see, the teachers are always friendly and have great ideas on how to make the subjects fun and get the pupils involved.