

WIDER OPENING OF SCHOOLS



LA position

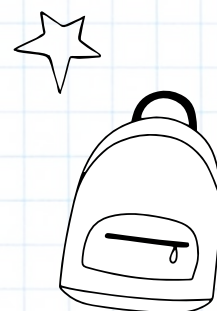
Bracknell Forest Council is supportive of the wider opening of schools from Monday 1 June. The council is working with schools to explore ways in which the government guidance can be implemented to enable pupils in key year groups to attend school. The council will continue to support schools with the implementation of updates to government guidance as they are published. It is recognised that each school is unique and will individually assess their own situation.



Critical Worker & Vulnerable Pupils

The council is supportive of the prioritisation of the pupils of critical workers and vulnerable pupils. Vulnerable pupils are defined as those who have a social worker, currently have an education, health care plan (EHCP) or are deemed otherwise vulnerable by educational providers or local authorities.

Vulnerable children of all year groups continue to be expected and encouraged to attend educational provision where it is appropriate for them to do so.



Primary first

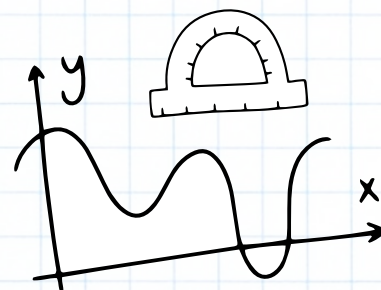
Some schools have been able to open to all eligible year groups in the first instance, while others are taking a phased approach adapting their plans as necessary. Schools are organising pupils into bubbles, so they learn and socialise together in the same groups everyday as a protective measure.

Provision in each school reflects their individual circumstances and schools will only widen access if it is safe to do so.



Secondary to follow

Secondary schools are planning provision for pupils in Year 10 and Year 12 to provide face-to-face teaching sessions which will be offered to pupils in groups on a rotating basis, decided by each school.



Recovery Curriculum

Schools will adopt a number of approaches to help them identify the needs of their pupils as they begin to return to school. The majority of schools will focus on PSHE and wellbeing, before then going on to identify gaps in pupils' learning. The LA has compiled and shared a range of resources to help leaders shape what recovery may look like in their schools.



Keeping staff and pupils safe

Bracknell Forest Education and Learning Team have worked closely with our schools to ensure the safety of staff and pupils. This has included updates and guidance regarding infection control and the delivery of PPE for use as required by guidance. Schools have also adopted strategies to minimise contact. These include the marking out of the school site using social distancing signage, reduced numbers operating in 'bubbles' and staggered timings. These strategies will evolve in line with government guidance and Bracknell Forest will continue to support schools through the recovery from this pandemic.



SEND – Best Endeavours

The council is working with schools across the borough and where Bracknell Forest pupils with EHCP's are placed to return risk assessments. Schools are prioritising pupils by need and the council is supportive of this approach.



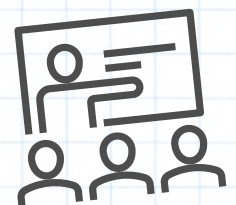
Transport

As schools begin to increase access, where a child would usually receive transport assistance from the council, parents are encouraged to take their children to school and receive mileage reimbursement for their journeys. If parents cannot do this, where possible, children will be transported with others from their pupil bubbles (if appropriate) to reduce risk. If neither of these options are possible, lone transport may be provided. Transport operators are using larger vehicles where possible and PPE is being worn where required. Parents are urged to ensure children wash their hands before and after trips and should not send their child to school if they or anyone in their household is showing symptoms of coronavirus.



Transition

Primary and Secondary leaders are working in partnership to consider transition arrangements for pupils. Opportunities being explored include virtual tours, introductions to key staff through virtual meeting platforms and orientation at the beginning of the academic year.



Headteacher and Staff Wellbeing

Regular online meetings are taking place between the council and headteachers of all Bracknell Forest schools. A Recovery Group has been set up and meets weekly, providing the opportunity for Headteachers to raise any concerns and seek appropriate guidance and support.

