



Jennett's Park CE Primary School

Head Teacher: Mrs Elizabeth Savage
 3 Tawny Owl Square,
 Jennett's Park, Bracknell RG12 8EB
 T: 01344 301269

secretary@jennettspark.bracknell-forest.sch.uk

2nd June 2020

Re wider reopening.

Dear Parents and Carers,

We have been preparing to open more widely for children and our plans are almost settled. We have set up the outside area completely to manage the one way system (a video showing you this will be published later in the week).

We have decided to delay inviting in Year 1 by 48 hours. We have shifted these dates as below in the table.

Wider reopening plan from week beginning 8th June

	Key workers and Vulnerable children	Year 1	Nursery	Reception	Year 6
Group sizes	12	10	6	8 to 10	12
Order of wider	1st	2nd	3rd	4th	5th
1st June	Training days . No children on site to prepare, train and reduce risks				
2nd June	Training days . No children on site to prepare, train and reduce risks				
3rd June	Yes				
4th June	Yes				
5th June	Yes				
8th June	Yes	Stonechats morning session			
9th June	Yes	Whinchats Morning session			
10th June	Yes	Both classes			
11th June	Yes	Both classes	Nursery begin to rejoin		
12th June	Yes	Both classes	Nursery offer continues		
15th June	Yes	Both classes	Nursery offer continues		
16th June	Yes	Both classes	Nursery offer continues		
17th June	Yes	Both classes	Nursery offer continues	Robins Morning session	
18th June	Yes	Both classes	Nursery offer continues	Woodpeckers morning	
19th June	Yes	Both classes	Nursery offer continues	Both classes	Year 6 session at Community centre - more details tbc
22nd June	Yes	Both classes	Nursery offer continues	Both classes	
23rd June	Yes	Both classes	Nursery offer continues	Both classes	
24th June	Yes	Both classes	Nursery offer continues	Both classes	Sabrewings morning session
25th June	Yes	Both classes	Nursery offer continues	Both classes	Sunbirds morning session
26th June	Yes	Both classes	Nursery offer continues	Both classes	Both classes



Our reasoning for the delay is not to cause you any extra anxiety, we are as eager to get going as some of you, but is simply because of the nationwide logistics of buying what we think is needed to keep children and staff safe. We have not just purchased 'lidded bin's and 'extra tissues'. Despite ordering most items on the day after Boris Johnson's speech in mid-May- delivery dates still remain fixed or even slower than normal. There are too many items which we are 'just short of' or 'coming by Friday' to fulfil our risk assessment.

Many are specialist items that we can't reach out to the community to donate- but thank you to the many people who have given practical donations of foodstuff for our many needy families. A big thank you to those families who donated signage. We now have enough but that was very helpful!

In this update we are just adding to the information sent last week. 3 things are different- the 48 hour delay – see above, the risk assessment and the map (both on website).

Risk assessment

The Risk assessment has been updated and Version 6 is attached to the website. Thank you to those who commented and help refine it to even greater levels of safety. Whilst it is not an exciting read it is an important one.

Returning to school:

We have held a return to school conference with class teachers and parents. Please expect a phone call this week for Year 1 and over the next weeks for those in, Nursery, Reception and Year 6.

Next week timetable for reintroduction to school and wider re-opening:

Key workers – continuing throughout. We are now pleased to serve over 60 families. Please contact secretary@ if you feel you are eligible in any year group and require a space. Please continue to book online.

Monday morning Stonechats who have indicated that they wish to return AND who have booked online will be invited in for the morning.

Tuesday morning Whinchats who have indicated that they wish to return AND who have booked online will be invited in for the morning.

Wednesday onwards Year 1 offer continues full time.

Thursday morning Nursery offer for those contacted by Ms Allen using our selection criteria.

Friday onwards Nursery offer continues.

Drop off and exit.

Drop off times are:

8:30 – 8:50 Key worker

9:00- 9:20 Year 1

9:30 Reception and Nursery

Tbc Year 6

Exit lunchtime 12:00 Year N or anyone with agreed half mornings

Exit pm

2:35 Year R

2:55 Year 1

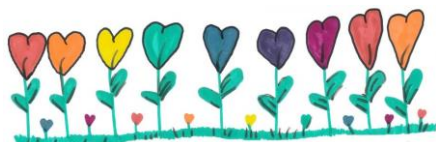
3:15 Key worker

Tbc Year 6

Those in R and 1 and siblings in KW pod taken to hall.

These slot times may need to vary – we will update you ASAP if needed.

If you miss your arrival slot you will need to wait until 9:50am.



Entry is only through main gate and to the room via the previously mentioned 4 main entry points shown on the map -ABCD.

Pick Up is via pod doors for all but Key workers who continue to exit via the hall. The practicalities of having 60+ children sat in socially distanced lines AND to get them to you safely under an hour was too impractical! Please be aware of spacing on the collection of your children. Move swiftly off site following the one way system once you have your child. We will tell you your child's pod number (corresponding to the map) on their first day.

As stated before you will not have an opportunity to chat to teachers at these times. Please email or call the office if you need to pass on anything longer than a quick 10 second message!

For those families with children in different age groups please drop off to the earliest time e.g. if you have a child in Year 1 and Year R drop off is 9am.

Settling your child.

We are unable to do much more than offering comforting words to settle your child. You will need to follow the advice given on Craig Tribe's Videos to reassure them- see advice for adult's page. If your child cannot separate from you without assistance we will ask you to leave with your child via the one way system to try again the next day. We will call you in-between to offer advice.

Booking system:

We ask you to book online **BY 4PM THE PREVIOUS NIGHT**. If you do not book you will not be invited onsite that day, but asked to return to home. We will take a note of your name and year group. If we have space we will then ring you at 10am. ***This is not to be difficult or obstructive to you.*** Not everyone wishes to have a full time space. We are sticking to the highest ratios possible we can currently fit in for everyone's safety. Greater numbers need greater staffing and we may not have capacity unless we know you are coming. Contact secretary@ if you experience any difficulty booking. Cancel places that are not needed, thank you.

We have updated both our SEND policy and Behaviour policy for reflection in times of COVID. They are attached. Please take time to read these. Other policies that have needed updates are Bereavement, Child Protection and Health and safety. All available on the website.

All other guidance from Friday's update still stands including one person per child, not bringing equipment, uniform and lunches.

Again a heartfelt thank you to everyone in my team for their commitment and dedication to keeping the children in our school safe. We will serve the common good and help as many of you who are struggling as possible safely and quickly.

Yours sincerely



Elizabeth Savage
Headteacher

