



Jennett's Park CE Primary School

Head Teacher: Mrs Elizabeth Savage
3 Tawny Owl Square,
Jennett's Park, Bracknell RG12 8EB
T: 01344 301269

secretary@jennetts.bonitas.org.uk

Update to Whole School re Covid Cases Action for Yr 1 Cohort - Today Action for Yr 4 Cohort - Today

10.01.22

Dear Parents and Carers,

We hope you are well. Unfortunately, we have a large amount of staff absence across the school but concentrated in the Year 4 team. We have also had several new cases in over the weekend within the student cohort for positive Lateral Flow Test (LFT). We are already very thinly staffed in other year groups so cannot move any more staff around further. We already have the maximum supply we could contact from any agency we work with.

Action for Year 4 Cohort

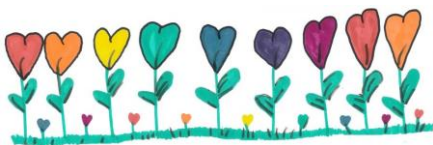
We have six new cases across Year 4 in this 10-day period and this is over our 10%. This combined with a lack of staffing in this year group has meant that we have made the decision to move to online learning for the next two days (Tuesday 11th and Wednesday 12th January) and welcome them back on Thursday 13th January.

Please in this time log onto Seesaw where work will be available. Please make sure that your child has a daily LFT. The government guidance now states that you do not need to get a confirmatory PCR. If the result is positive please self-isolate for 10 days. **See further details at the end of the letter.**

If you have capacity to collect from 1pm today please come to the office and we will arrange for your child to be brought to you. There is no need to ring/email ahead.

Action for Year 1 Cohort

We have eight current new cases amongst children in Year 1 both Stonechats and Whinchats. This is in the last 10-day period and are of cases of children that have been school so have the potential to spread the virus. In the reverse of the situation of the above, we are able to staff but would appreciate anyone that has not done a LFT in the last 24 hours to come and collect your child from 1pm today. If this is negative you may bring your child back in tomorrow. Tuesday 11th January.



Update for Whole School

Table

Year Group	Positive Student Cases
Nursery	0
Reception	1
Year 1	8
Year 2	2
Year 3	2
Year 4	6
Year 5	5
Year 6	2

This is still below the 10% of the entire school.

Some welcome news that you no longer have to seek PCR after a positive LFT result. Confirmatory PCR tests following a positive lateral flow device (LFD) test result are to be temporarily suspended from Tuesday 11th January. This will mean that anyone who receives a positive LFD test result will be required to self-isolate immediately and will not be required to take a confirmatory PCR test. As with the latest guidance if you test negative on day 6 and 7 then we will welcome you back on day 8. To help day 1 is the first day of testing positive.

If your child is in receipt of Free School Meals the kitchen can provide a Jacket Potato for your child that will need to be collected from the school from 11.30am onwards on Tuesday and Wednesday. If you would like the kitchen to provide this then please contact the school office before 9.15am on the day to let them know.

This has not been easy decision to make. If you need a loan of technology for those two days please let us know.

We are already following all our heightened guidance as per our risk assessment. This includes separate break times and additional cleaning.

Thank you for everyone who has been offering your positive support.

Yours sincerely



Liz Savage
Headteacher of Jennett's Park CE Primary

